



engaging quality made furniture for the way you live

Wallbeds
"n" More

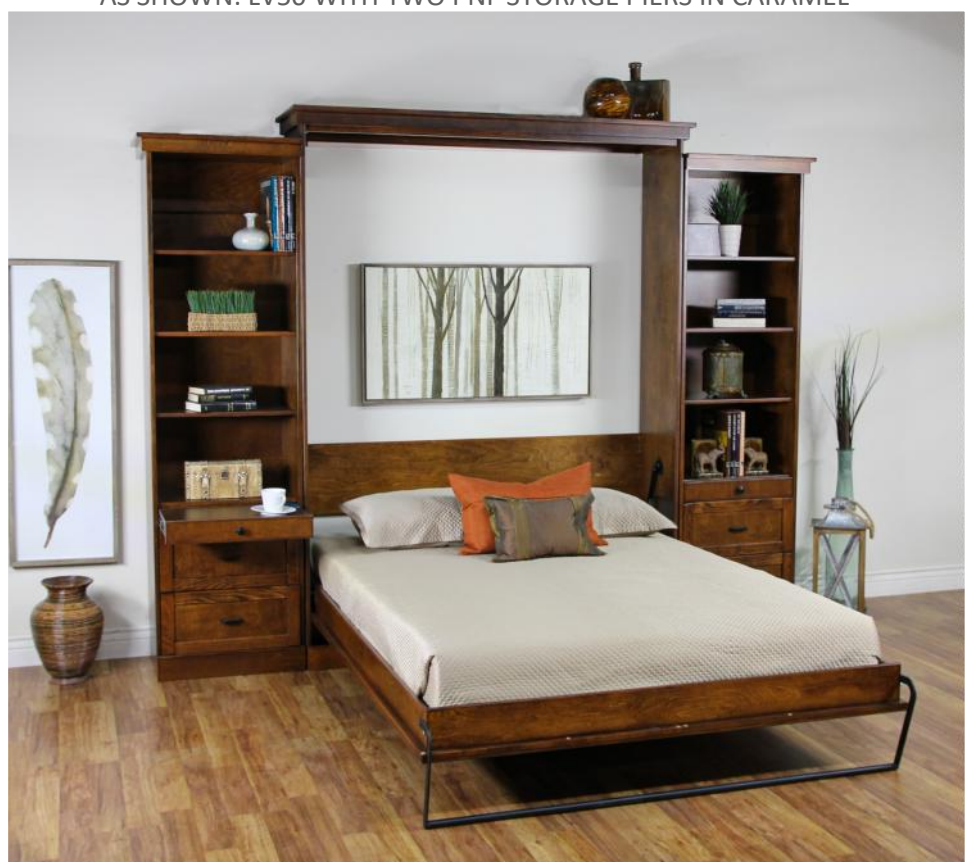
www.wallbedsnmore.com

ALL PRODUCTS MADE IN THE U.S.A. since 1990

Product of Westcott Designs Inc.



AS SHOWN: LV50 WITH TWO PNF STORAGE PIERS IN CARAMEL





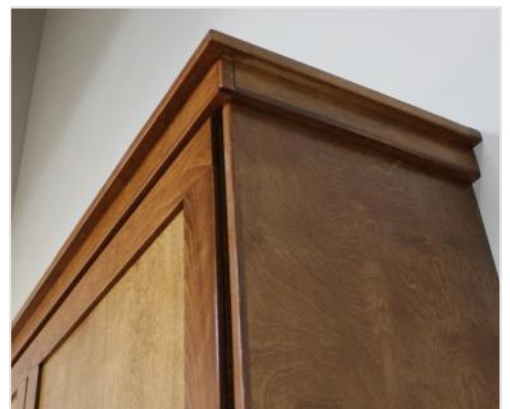
LODGE SKU: LV50

SUNSET FINISH

Welcome your guests with the warm feel of a cozy lodge. The Lodge features a wrap around crown molding on the cabinet top with side storage cabinets that step down for a dramatic effect.

FINISH OPTIONS FOUND ON PAGE 54

MADE
IN THE USA





KEYSTONE



BARK GRAY

MURPHY DESK offers you a functional work space then folds up and out of the way when not in use. It opens to a 48" long desktop. Above the desk are three adjustable shelves. Behind the bottom door is another adjustable shelf. DESK SKU: PAF





AS SHOWN: KV50, PUF, PAF in Caramel Finish

KEYSTONE

SKU: KV50

By simply grasping the center handles, use your body weight to help the bed open very slowly toward the floor. Once partially opened the bed will float down the rest of the way to the floor.

FINISH OPTIONS FOUND ON PAGE 54





AS SHOWN: GV50, PUF, PAF in CINNAMON FINISH



AS SHOWN:
Champagne Satin
Gold Handles

FINISH OPTIONS FOUND ON PAGE 54

MADEUSA
IN THE

Options are subject to change without notice * Made in the U.S.A.

GLEN ELLYN

You can't help but
notice the
beautiful
intricate
design pattern
of the
GLEN ELLYN
Murphy Wallbed.
All this beauty
and a comfortable
bed for your
guests to enjoy!



Options are subject to change without notice * Made in the U.S.A.



AS SHOWN: GV50, (2)NFS IN CAMEL

GLEN ELLYN SKU: GV50



CODY BRONZE



CODY BLACK



CODY NICKEL



CYPRUS BRUSHED GOLD

MADE IN THE USA

FINISH OPTIONS FOUND ON PAGE 54

* Options are subject to change without notice

SARATOGA

SKU: SV50



CARAMEL FINISH



FINISH OPTIONS FOUND ON PAGE 54



ATHERLY BRONZE



ATHERLY NICKEL



BRONZE BAR



NICKEL BAR



JAZZ, KEYSTONE, LODGE, SARATOGA AND GLEN ELLYN STORAGE CABINETS

NIGHTSTAND PIER with DOOR

2 drawers, pull out tray table, open shelf and upper door.



PUF-LSF 25.5 x 85

PUF-RSF 25.5 x 85

NIGHTSTAND PIER CABINET

2 drawers, pull out tray table with open adjustable shelves



NFS-LSF 18.5 x 85

NFS-RSF 18.5 x 85

PNF-LSF 25.5 x 85

PNF-RSF 25.5 x 85

LATERAL FILES PIER CABINET- 2 file drawers, pencil drawer with open adjustable shelves.



LFS-LSF 18.5 x 85

LFS-RSF 18.5 x 85

PLF-LSF 25.5 x 85

PLF-RSF 25.5 x 85

WARDROBE

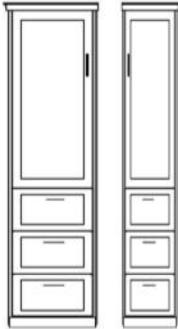
3 drawers, upper door with 2 shelves. 25.5" pier includes clothes valet.

PWF-LSF 25.5 x 85

PWF-RSF 25.5 x 85

WFS-LSF 18.5 x 85

WFS-RSF 18.5 x 85



FILE WARDROBE

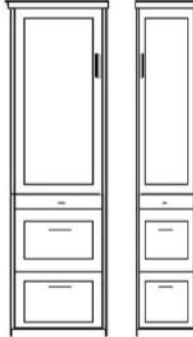
2 lateral file drawers, Pencil drawer and upper door with 2 shelves. 25.5" pier includes clothes valet.

PXF-LSF 25.5 x 85

PXF-RSF 25.5 x 85

XFS-LSF 18.5 x 85

XFS-RSF 18.5 x 85



GUEST WARDROBE

3 drawers with 2 upper doors with clothes valet.

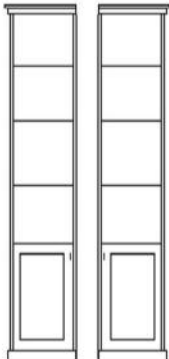
Specify left or right side facing

PWU-LSF 33.5 x 85

PWU-RSF 33.5 x 85



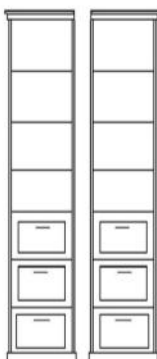
DOOR CABINET



DFS-LSF 18.5 x 85

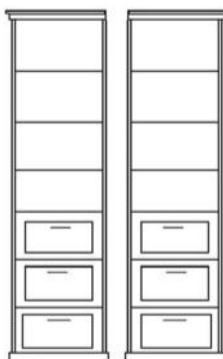
DFS-RSF 18.5 x 85

3 DRAWER PIER CABINET- 3 drawers with open adjustable shelves



TFS-LSF 18.5 x 85

TFS-RSF 18.5 x 85



PTF-LSF 25.5 x 85

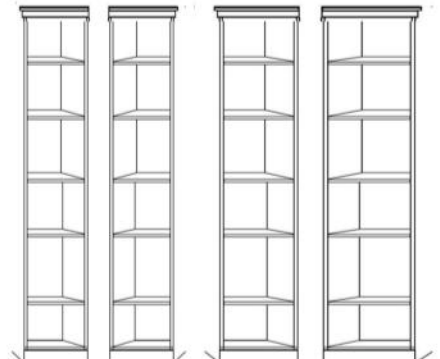
PTF-RSF 25.5 x 85



PGF-LSF 33.5 x 85

PGF-RSF 33.5 x 85

BOOKCASE



BFS-LSF 18.5 x 85

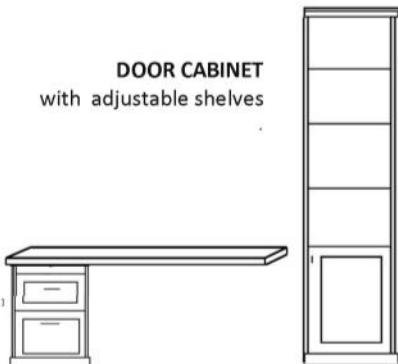
BFS-RSF 18.5 x 85

PBF-LSF 25.5 x 85

PBF-RSF 25.5 x 85

DOOR CABINET

with adjustable shelves



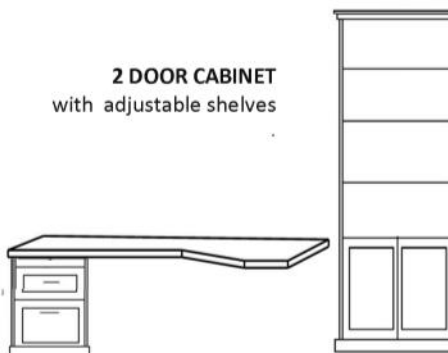
FD- DESK BASE
with STRAIGHT DESKTOP

PCF-LSF 25.5 x 85

PCF-RSF 25.5 x 85

2 DOOR CABINET

with adjustable shelves



LD- DESK BASE
With SHAPED DESKTOP

DFL-LSF 33.5 x 85

DFL-RSF 33.5 x 85



MURPHY DESK **PAF-LSF** 25.5 x 85
PAF-RSF 25.5 x 85

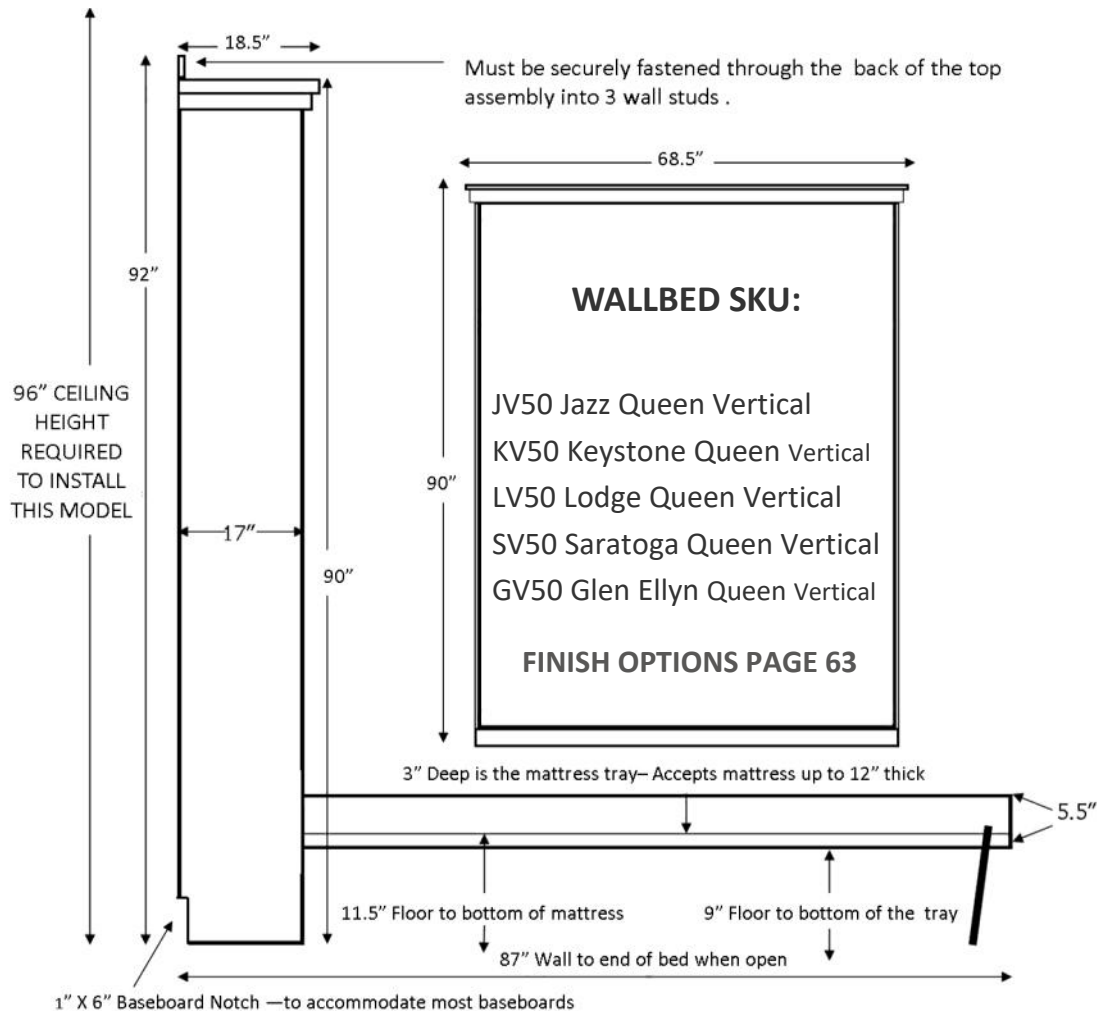


JAZZ

BARK GRAY FINISH

SKU: JV50

JV50 BG



DUBLIN

SKU: DV50



Pier cabinets feature:

- wood construction
- Solid farm grown beech trim
- Full extension drawer glides
- Adjustable shelves
- 1" x 6" baseboard notch

FINISH OPTIONS FOUND ON PAGE 54

As Shown: DV50 APCF APTF IN COGNAC FINISH

QUEEN SIZE accepts up to a 12" thick mattress (not included)— mattress sits inside a wood box so the bedding is tucked in and stays on when closing the bed. (No need to remove sheets and comforter— must remove pillows). Wood mattress box surround has interior slats— acting as a box spring .

Proven safe piston lift system.

TO OPEN— lift the panel foot near the top and grasp the hole, use your body weight to help the bed open very slowly toward the floor. Once partially opened the bed will float down the rest of the way to the floor.

HANDLES—
Choose either
Satin Nickel or
Oil Rubbed
Bronze Bar



* Options are subject to change without notice * Made in the U.S.A.



DUBLIN was designed to complement the new trends in evolving furniture design. We craft the Dale and the FERN with Individual planks of wood, randomly selected, to make each piece unique.



As Shown: DV50 (2) BQS in WHITE (W)

COGNAC FINISH



DUBLIN IN BARK



DUBLIN IN SUNSET

FINISH OPTIONS FOUND ON PAGE 54



As Shown: DV50 ADFL ALD IN BARK GRAY FINISH



DUBLIN

HOME OFFICE PACKAGE DESK AND BED

Uses 97" of wall space
67" LONG DESKTOP
extends into the room
85" from the wall. Below
the shaped desktop is a
double door cupboard
with one adjustable shelf
inside. The DESK features
one lateral file drawer,
medium drawer and a
pencil drawer.



FINISH OPTIONS FOUND ON PAGE 54

* Options are subject to change without notice * Made in the U.S.A.



FALLBROOK

SKU: FV50

AS SHOWN: FV50 with two ATQS in Bark Gray Finish



ATQS storage cabinet



AS SHOWN: FV50 with ATQS in Bark Gray Finish



OV50 (2) ANQS in White



SONOMA

Queen size OV50 WHBG

Full size OV46 WHBG

Twin size OV33 WHBG

MADE IN THE USA

FINISH OPTIONS ON PAGE 54



OV50 with two ANQS in White-Bark Gray Finish

SONOMA TWO TONE

Modern SONOMA wallbed pairs a sleek white body with a bark gray finished frame to offer an eclectic look.

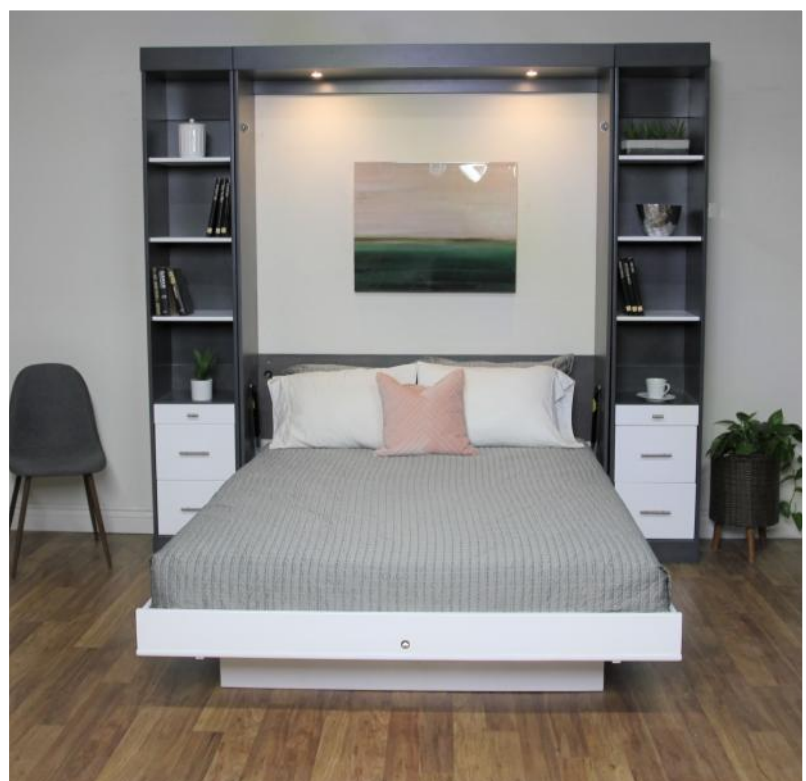
Available in Queen, Full and Twin Sizes

Queen size OV50 WHBG

Full size OV46 WHBG

Twin size OV33 WHBG

MADE IN THE USA





Modern SONOMA shown with a white front in a Sunset finished frame.

AS SHOWN: OV50 APTQ APCQ AFD in White with Sunset Finish WHS



Add a work space with the peninsula desk. The desk can go on either side of the wallbed.



AS SHOWN: OV50 (2) ATQS in White with Sunset Finish WHS



SKU EV50 WITH (2) ATQS CABINETS



MADE **USA**
IN THE

BARK GRAY FINISH



EURO SKU: EV50 EV46

MADE IN THE USA

The Euro is available in both the Queen and the Full Vertical size. Shown left —Queen Euro and two 16" wide 3 drawer storage pier cabinets. (EV50, (2) APTQ)

Shown Above— Queen bed with 85" tall side pier cabinets for a step down look. These are the 24" wide storage nightstand pier cabinets. (EV50, (2) APNQ)

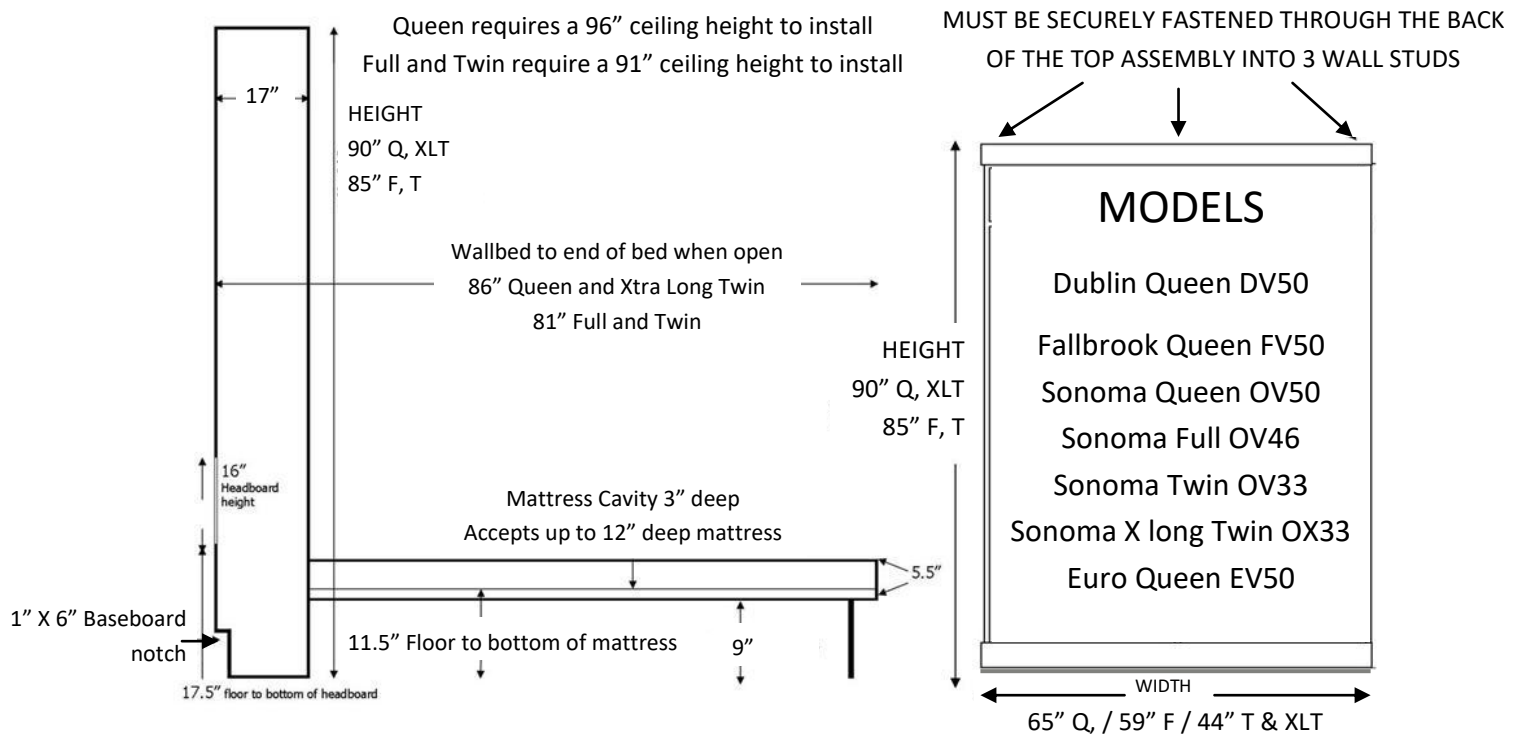
Shown Right: Queen bed with step down 16" wide nightstand piers. (EV50, 2 ANFS)

LED LIGHTS are available to add to any of our wallbeds. On/Off switch and USB charging port found on the headboard.

Specify silver or black fixtures.

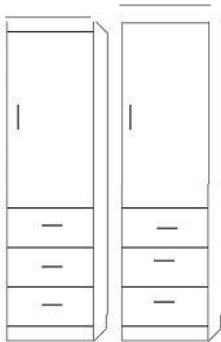


Options are subject to change without notice



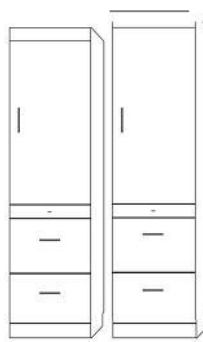
WARDROBE
3 drawers,
upper door with
clothes valet.
*Specify left or right
side Door handle
when facing the pier
cabinet.*

APWF 24 x 85
APWQ 24 x 90



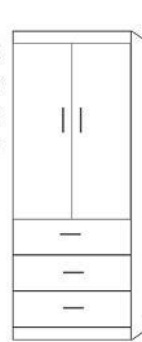
FILE WARDROBE
2 lateral file drawers,
Pencil drawer and
upper door with
clothes valet.
*Specify left or right side
Door handle when facing the
pier cabinet.*

APXF 24 x 85
APXQ 24 x 90



GUEST WARDROBE
3 drawers with
2 upper doors with
clothes valet.

APWU 32 x 85

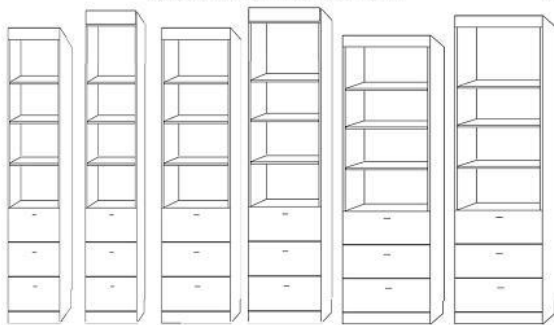


BOOKCASE

ABFS 16 x 90
ABQS 16 x 90
APBF 24 x 85
APBQ 24 x 90

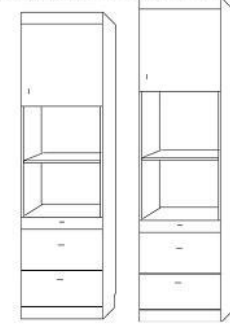


3 DRAWER PIER CABINET



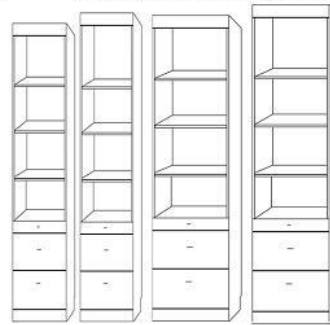
ATFS 16 x 85
ATQS 16 x 90
APTF 24 x 85
APTQ 24 x 90

NIGHTSTAND PIER with DOOR



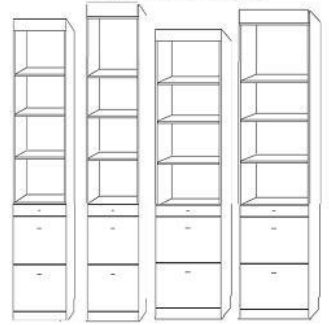
APUF 24 x 85
APUQ 24 x 90

NIGHTSTAND PIER CABINET



ANFS 16 x 85
ANQS 16 x 90
APNF 24 x 85
APNQ 24 x 90

FILE PIER CABINET



ALFS 16 x 85
ALQS 16 x 90
APLF 24 x 85
APLQ 24 x 90

DOOR CABINET



ADFS 16 x 85
ADQS 16 x 90

DOOR CABINET

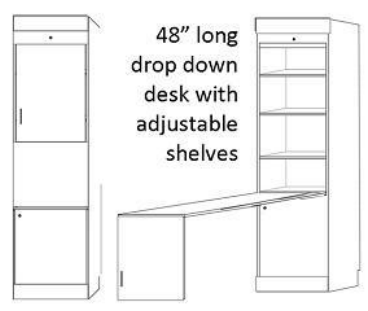


APCF 24 x 85
APCQ 24 x 90

2 DOOR CABINET



ADFL 32 x 85
ADQL 32 x 90

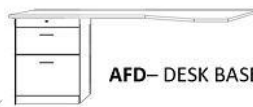


MURPHY DESK APAF 24 x 85



AFD— DESK BASE

BSD— STRAIGHT DESKTOP
Requires APCF or APCQ to
receive the desktop



AFD— DESK BASE

BSDL— SHAPED DESKTOP
Requires ADFL or ADQL to
receive the desktop

48" long
drop down
desk with
adjustable
shelves

NATURAL FINISH



LED LIGHTS are available to add to any of our wallbeds. On/Off switch and USB charging port found on the headboard. Specify silver or black.



SKU EVX50
2 ATFS CABINETS

EURO DELUXE has a dramatic curved top, interior bookcases on each side of a shelf headboard. Interior shelves are 4" deep and adjustable. We've taken our EURO front and added a deeper cabinet to make it the Deluxe version. The side pier cabinets step back from the Wallbed for a dramatic look. For a stepped look order full size 85" tall side storage cabinets.

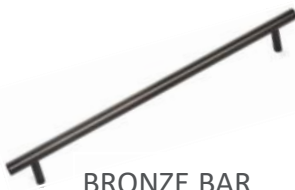
EURO DELUXE SKU: EVX50

measures: 75" wide x 25" deep x 90" high
bed extends 92" into the room when opened
Accepts a standard Queen size mattress up to 12" thick

SEE PREVIOUS PAGE
FOR ALL SIDE PIER
CABINET OPTIONS.



SATIN NICKEL BAR



BRONZE BAR



SKU EVX50, APTF, APWF



WRAP CROWN MOLDING



WOODLAND SKU: WV50



AS SHOWN: WV50 WITH 2 WNFS PIER CABINETS IN SUNSET FINISH



COGNAC FINISH



HV50 (2)WPUF in white finish

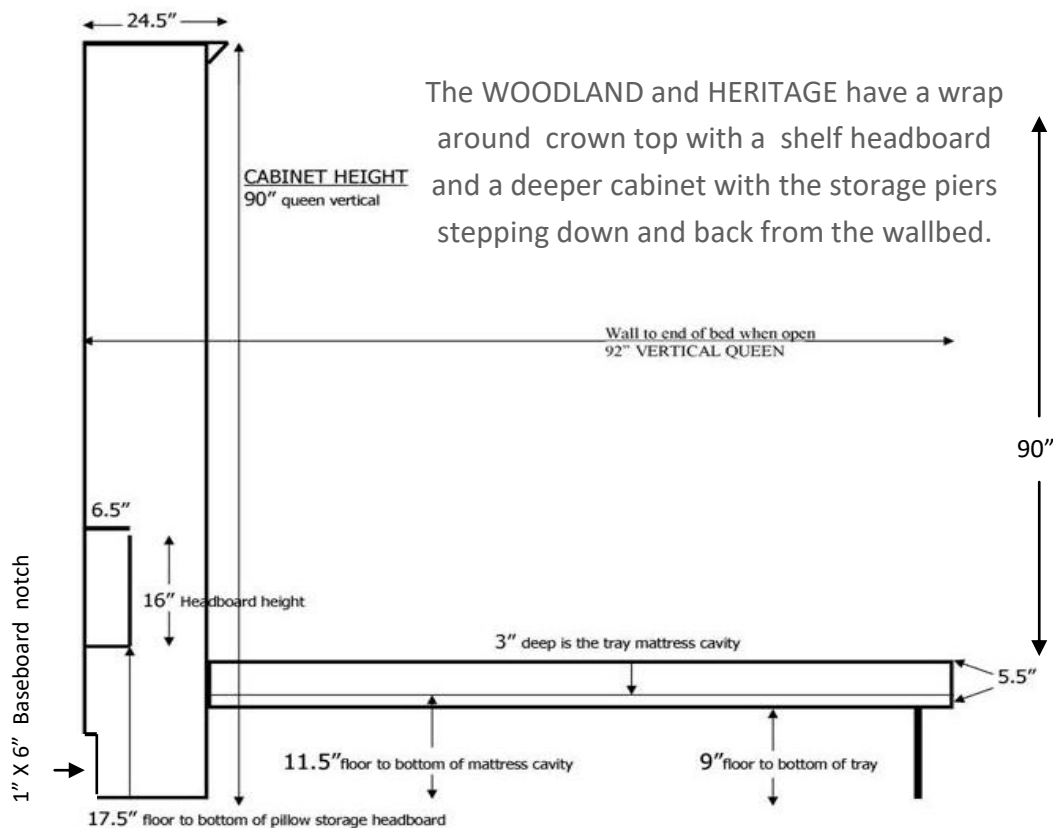


HV50 HPDF HPUF in Cinnamon finish

HERITAGE SKU: HV50

TO OPEN— lift the panel foot near the top and grasp the hole, use your body weight to help the bed open very slowly toward the floor. Once partially opened the bed will float down the rest of the way to the floor.





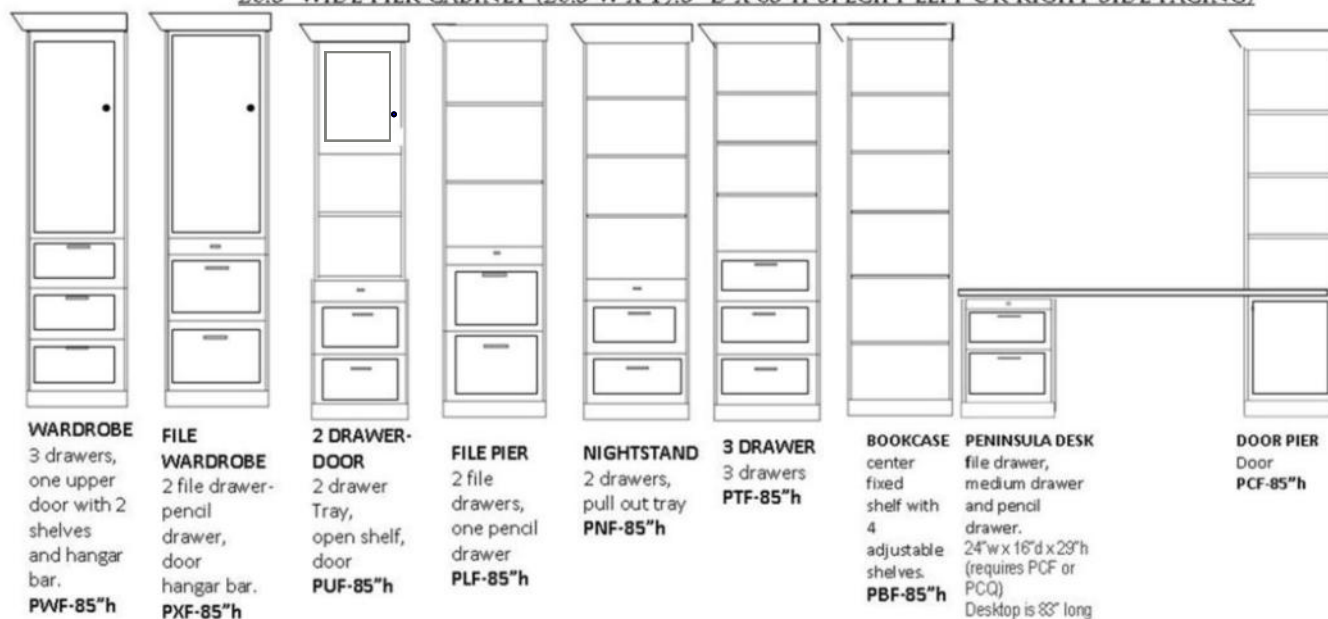
MADE IN THE USA

CINNAMON FINISH

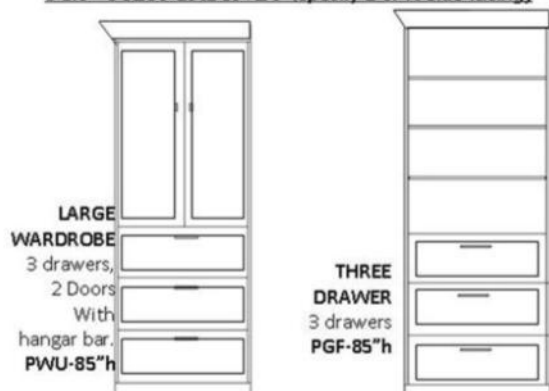
HERITAGE QUEEN VERTICAL SKU: HV50

WOODLAND QUEEN VERTICAL SKU: WV50

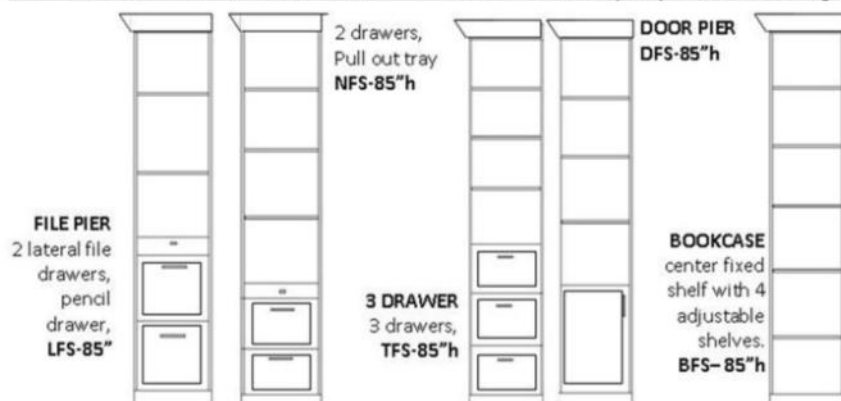
26.5" WIDE PIER CABINET (26.5"W X 19.5" D X 85"H SPECIFY LEFT OR RIGHT SIDE FACING)



34.5" PIER CABINET (specify L or R side facing)



18.5" WIDE SIDE PIER CABINET (18.5"W X 19.5" D X 85"H specify L or R side facing)





AS SHOWN: PV50 PPNF PPWF IN SUNSET

PORTOLA

The Portola is available in both the Queen and the Full Vertical sizes and also offered in the Queen Horizontal size.

LED LIGHTS are available to add to any of our wallbeds. On/Off switch and USB charging port found on the headboard. Specify silver or black fixtures.



Options are subject to change without notice * Made in the U.S.A.



PORTOLA

THE HORIZONTAL MODEL IS THE ROOM SOLUTION when you just can't fit the taller Vertical model. It is only 70.5" high and extends into the room only 66" when open.

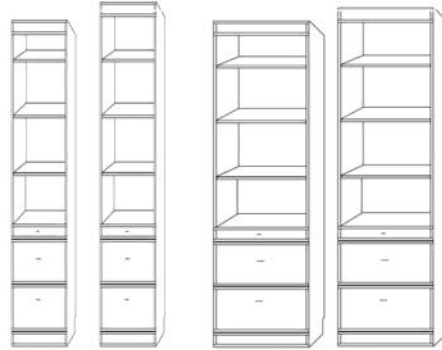
TO OPEN: Lift the panel foot. Grab the hand hole and use your body weight to help the bed open very slowly toward the floor. Once partially opened the bed will float down the rest of the way to the floor.

MADE
IN THE USA

AS SHOWN: PS50 in CARAMEL FINISH



NIGHTSTAND PIER CABINET- 2 drawers, pull out tray table with open adjustable shelves



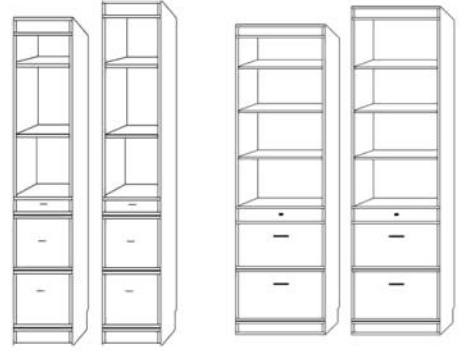
PNFS 16 x 85

PPNF 24 x 85

PNQS 16 x 90

PPNQ 24 x 90

LATERAL FILES PIER CABINET- 2 file drawers, pencil drawer with open adjustable shelves.



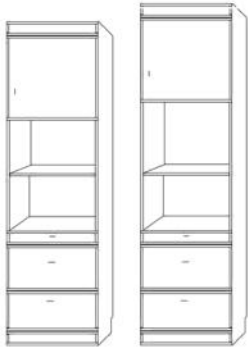
PLFS 16 x 85

PPLF 24 x 85

PLQS 16 x 90

PPLQ 24 x 90

NIGHTSTAND PIER with DOOR- 2 drawers, pull out tray table, open shelf and upper door.



PPUF 24 x 85

PPUQ 24 x 90

WARDROBE
3 drawers, upper door with clothes valet.

Specify left or right side Door handle when facing

PPWF 24 x 85

PPWQ 24 x 90



FILE WARDROBE
2 lateral file drawers, Pencil drawer and upper door with clothes valet.

Specify left or right side Door handle when facing

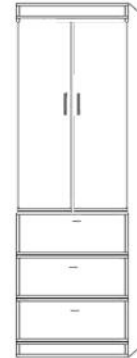
PPXF 24 x 85

PPXQ 24 x 90



GUEST WARDROBE
3 drawers with 2 upper doors with clothes valet.

PPWU 32 x 85



DOOR CABINET



PDFS 16 x 85

PDQS 16 x 90

3 DRAWER PIER CABINET- 3 drawers with open adjustable shelves



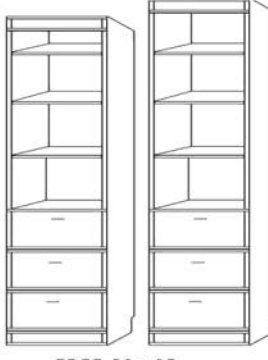
PTFS 16 x 85

PTQS 16 x 90



PPTF 24 x 85

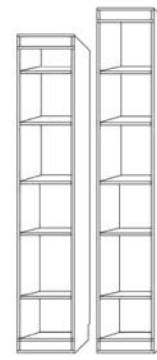
PPTQ 24 x 90



PPGF 32 x 85

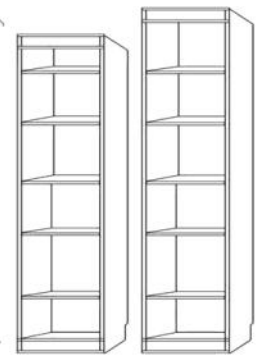
PPGQ 32 x 90

BOOKCASE



PBFS 16 x 90

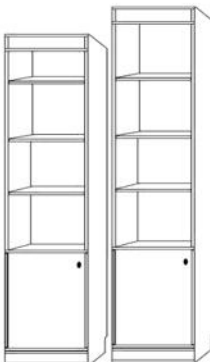
PBQS 16 x 90



PPBF 24 x 85

PPBQ 24 x 90

DOOR CABINET



PPCF 24 x 85

BPCQ 24 x 90

2 DOOR CABINET



PDFL 32 x 85

PDQL 32 x 90

48" long drop down desk with adjustable shelves



MURPHY DESK PPAF 24 x 85

PFD- DESK BASE

BSD- STRAIGHT DESKTOP

PFD- DESK BASE

BSDL- SHAPED DESKTOP



ABOVE: PV50 PPTF PPCF PFD in CINNAMON FINISH

BELOW: PV50 PPCQ PFD in CINNAMON FINISH



Add a work space with the peninsula desk. The desk can go on either side of the wallbed. The desk features a lateral file drawer, a medium drawer and a pencil drawer.



The Barrington is available in Queen, Full and Twin Vertical sizes and also offered in the Queen Horizontal size.

MOST POPULAR STORAGE CABINET
Features two good sized drawers and a pull out tray surface to act as a nightstand. Above are three adjustable shelves for additional storage. This pier is available in both the 16" width and the 24" width depending on your available wall space.



BARRINGTON

ABOVE: BV50 WITH 2 BNFS in GRAY FINISH BELOW: BV50 WITH 2 BPNF in CINNAMON FINISH





BV50 BPUF BPNF IN CARAMEL FINISH

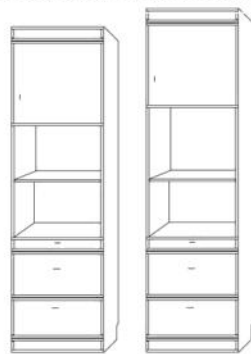
BARRINGTON



LED LIGHTS are available to add to any of our wallbeds. On/Off switch and USB charging port found on the headboard. Silver or black.

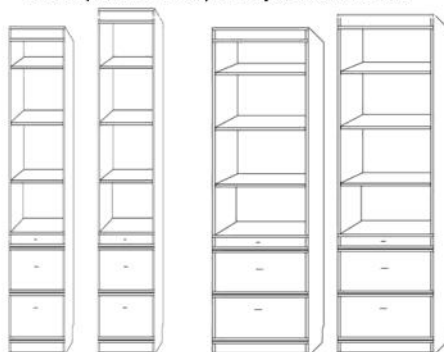


NIGHTSTAND PIER with DOOR- 2 drawers, pull out tray table, open shelf and upper door.



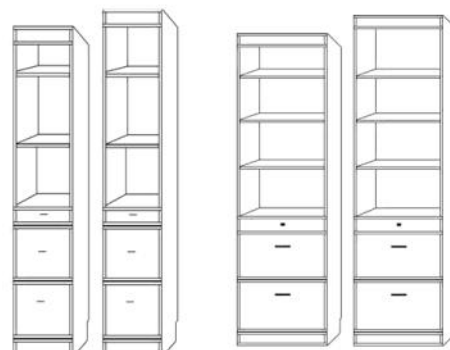
BPUF 24 x 85 BPUQ 24 x 90

NIGHTSTAND PIER CABINET- 2 drawers, pull out tray table with open adjustable shelves



**BNFS 16 x 85 BPNF 24 x 85
BNQS 16 x 90 BPNQ 24 x 90**

LATERAL FILES PIER CABINET- 2 file drawers, pencil drawer with open adjustable shelves.



**BLFS 16 x 85 BPLF 24 x 85
BLQS 16 x 90 BPLQ 24 x 90**

WARDROBE
3 drawers, upper door with clothes valet.

*Specify left or right side
Door handle when facing*

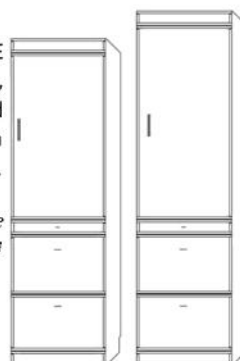
**BPWF 24 x 85
BPWQ 24 x 90**



FILE WARDROBE
2 lateral file drawers, Pencil drawer and upper door with clothes valet.

*Specify left or right side
Door handle when facing*

**BPXF 24 x 85
BPXQ 24 x 90**



GUEST WARDROBE
3 drawers with 2 upper doors with clothes valet.

BPWU 32 x 85

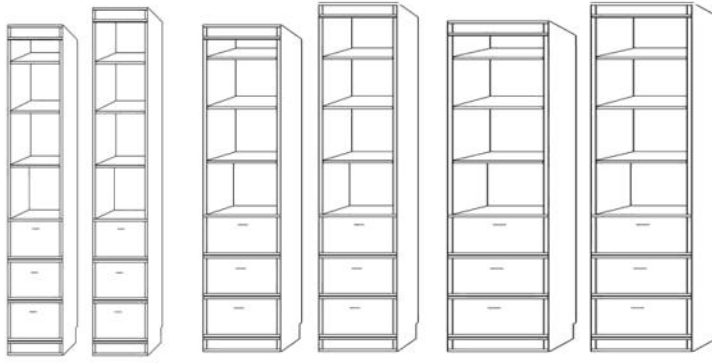


DOOR CABINET



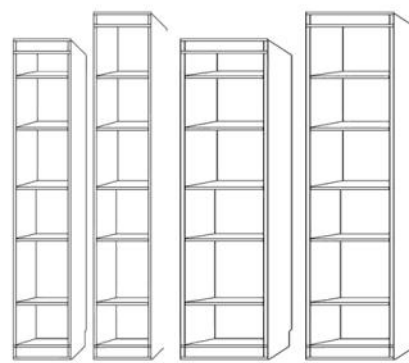
**BDFS 16 x 85
BDQS 16 x 90**

3 DRAWER PIER CABINET- 3 drawers with open adjustable shelves



**BTFS 16 x 85 BPTF 24 x 85 BPGF 32 x 85
BTQS 16 x 90 BPTQ 24 x 90 BPGQ 32 x 90**

BOOKCASE



**BBFS 16 x 90 BBQS 16 x 90
BPBF 24 x 85 BPBQ 24 x 90**

DOOR CABINET



**BPCF 24 x 85
BPCQ 24 x 90**

2 DOOR CABINET

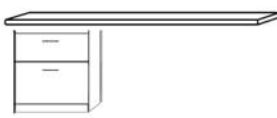


BDFL 32 x 85 BDQL 32 x 90

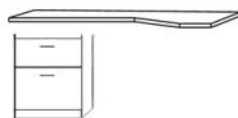
48" long drop down desk with adjustable shelves



MURPHY DESK BPAF 24 x 85



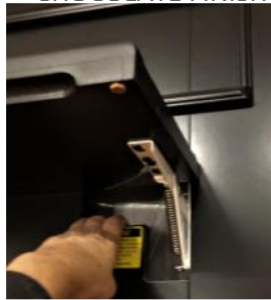
**BFD- DESK BASE
BSD- STRAIGHT DESKTOP**



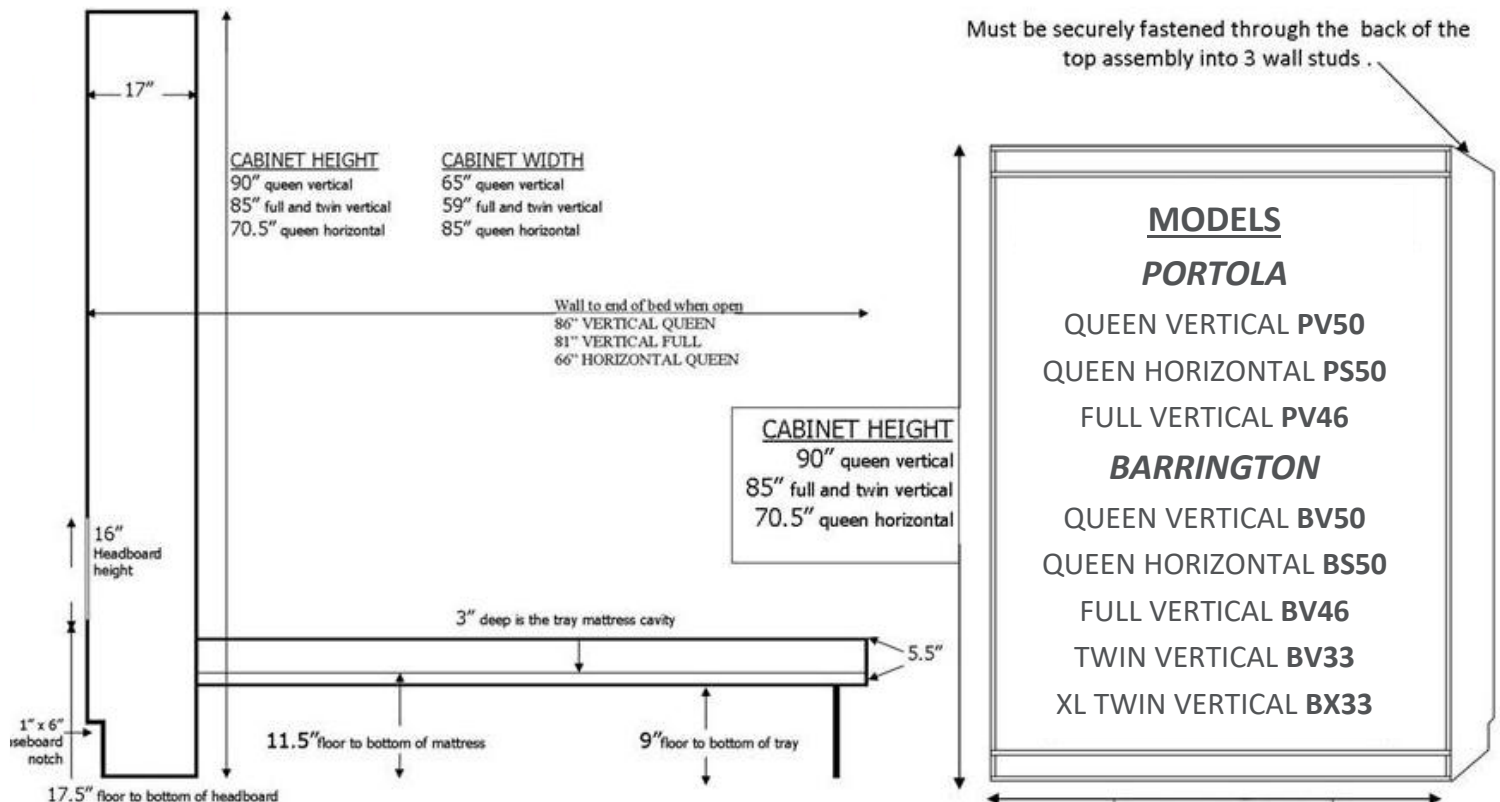
**BFD- DESK BASE
BSDL- SHAPED DESKTOP**



CHOCOLATE FINISH



TO OPEN— lift the panel foot near the top and grasp the hole, use your body weight to help the bed open very slowly toward the floor. Once partially opened the bed will float down the rest of the way to the floor.





SKU: NV50 with PNF, DFL and LD

The NANTUCKET has a recessed panel front and features a bead board accent. **ADD A DESK** Make use of your space by adding a large shaped desk. The desk base comes with three drawers; pencil, lateral file and a medium drawer.

NANTUCKET

QUEEN SIZE NV50

FULL SIZE NV46

Nantucket wallbed with two nightstand storage pier cabinet—featuring two drawers and a pull out tray surface with open adjustable shelves above.



SKU: NV50 with (2) PNF



RV50 with (2) PWQ

RYLAND

QUEEN SIZE RV50

FULL SIZE RV46

GENEROUS STORAGE

On both sides of this wallbed you will find ample storage in our wardrobe cabinets. Behind the door is a clothes hanger and below are three good sized drawers.

Crown molding is flush on the sides so you can match up the storage pier cabinet for a tight fit. Choose Queen Height Piers when you want the pier to match the height of a Queen Wallbed. Great when your wall can only fit one storage pier. For a step down look, go with the Full Height piers which are 5" shorter and match the height of a full size wallbed.



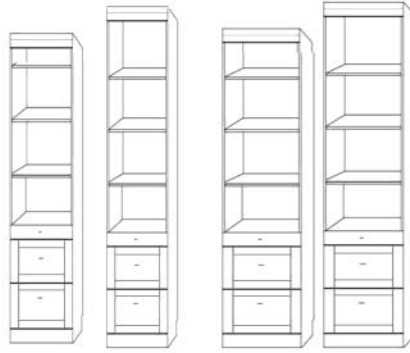
NANTUCKET, RYLAND and YELLOWSTONE STORAGE CABINET OPTIONS

NIGHTSTAND PIER with DOOR- 2 drawers, pull out tray table, open shelf and upper door.



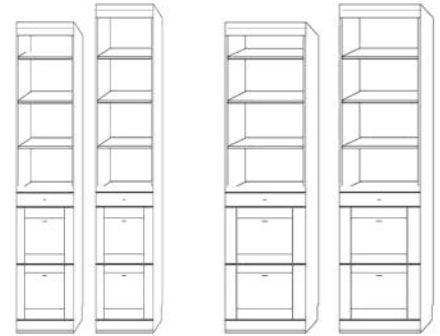
PUF 24 x 85 **PUQ** 24 x 90

NIGHTSTAND PIER CABINET- 2 drawers, pull out tray table with open adjustable



NFS 16 x 85 **PNF** 24 x 85
NQS 16 x 90 **PNQ** 24 x 90

LATERAL FILES PIER CABINET- 2 file drawers, pencil drawer with open adjustable shelves.



LFS 16 x 85 **PLF** 24 x 85
LQS 16 x 90 **PLQ** 24 x 90

WARDROBE
3 drawers, upper door with clothes valet.

Specify left or right side Door handle when facing

PWF 24 x 85
PWQ 24 x 90



FILE WARDROBE
2 lateral file drawers, Pencil drawer and upper door with clothes valet.

Specify left or right side Door handle when facing

PXF 24 x 85
PXQ 24 x 90



GUEST WARDROBE
3 drawers with 2 upper doors with clothes valet.

PWU 32 x 85



DOOR CABINET

3 DRAWER PIER CABINET- 3 drawers with open adjustable shelves

BOOKCASE



DFS 16 x 85
* **DQS** 16 x 90



TFS 16 x 85
TQS 16 x 90



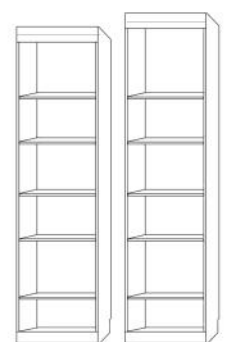
PTF 24 x 85
PTQ 24 x 90



PGF 32 x 85
PGQ 32 x 90



BFS 16 x 90
BQS 16 x 90

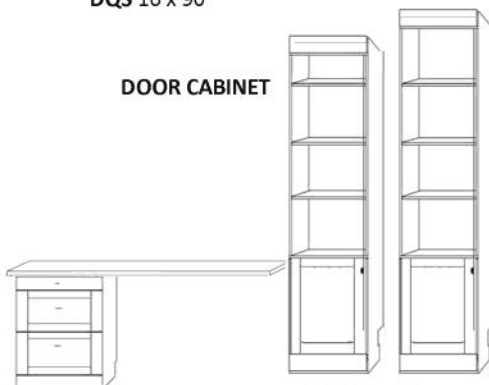


PBF 24 x 85
PBQ 24 x 90

DOOR CABINET

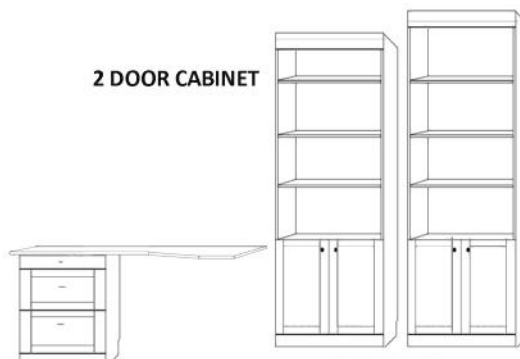
2 DOOR CABINET

48" long drop down desk with adjustable shelves

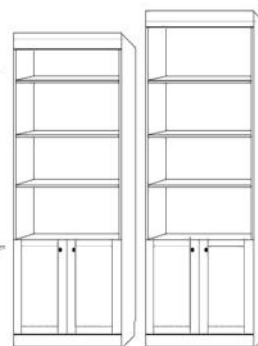


FD- DESK BASE with STRAIGHT DESKTOP

PCF 24 x 85
* **PCQ** 24 x 90



LD- DESK BASE With SHAPED DESKTOP



DFL 32 x 85
* **DQL** 32 x 90



MURPHY DESK **PAF** 24 x 85

* NANTUCKET INCLUDES BEAD BOARD ACCENT IN LOWER DOOR PANEL



YELLOWSTONE

SKU: YV46, PWF in CAMEL FINISH

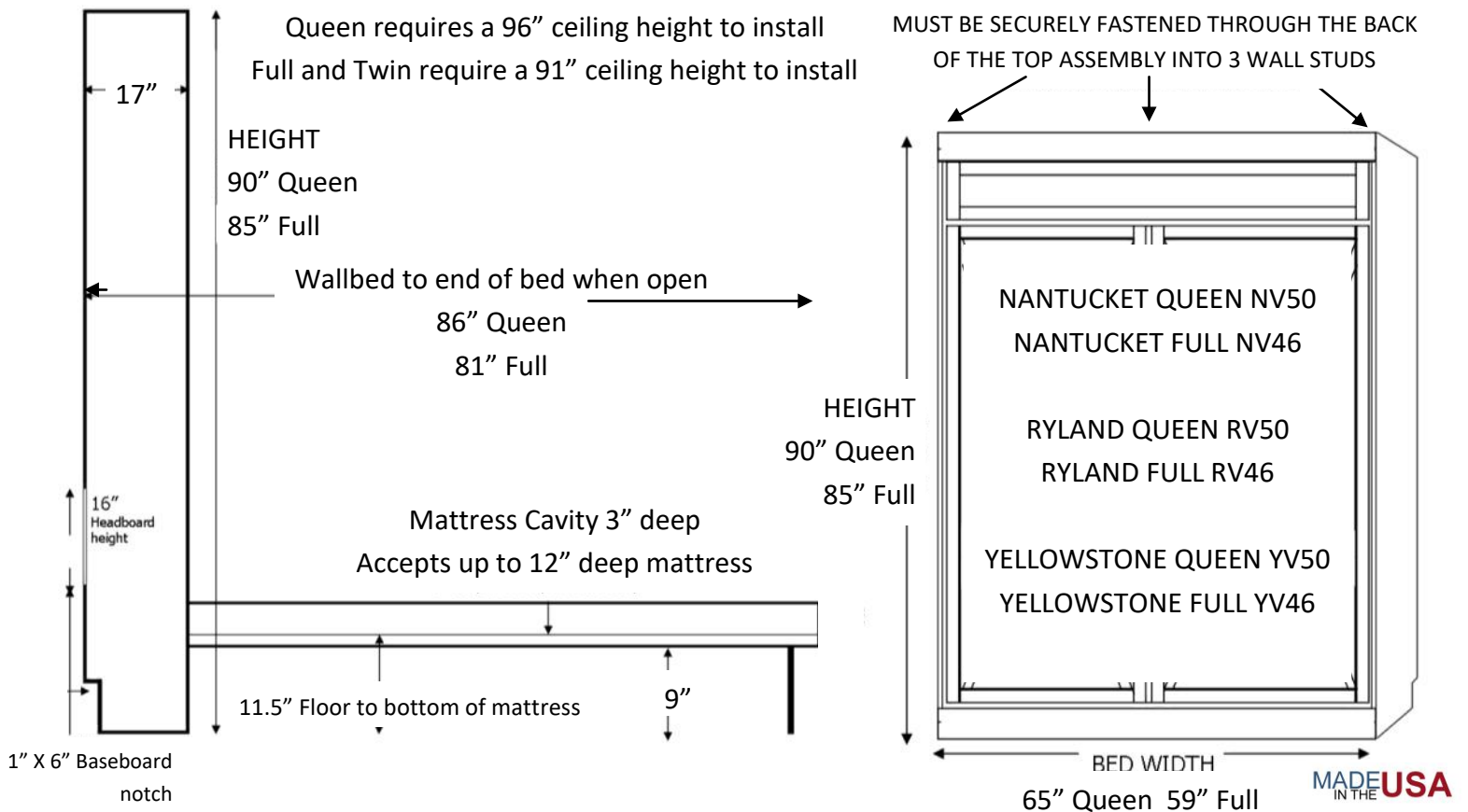




TABLE BEDS

YOU COULD START UP A FAMILY GAME NIGHT,
MAKE A COZY QUILT, SHARE A MEAL OR
SPREAD OUT YOUR PROJECT WITH PLENTY OF ROOM TO WORK.
HIDDEN INSIDE IS A COMFORTABLE EXTRA BED.

The table bed comes in two styles and a variety of finishes, so you can easily match the décor of your home.



The large table is a space saver as it hides away when not in use, freeing up a big area during the day, making any space



The table is virtually undetected and concealed in the face of the Murphy table bed.

To open, simply lift the panel foot, unlock the button locks and while holding the table, lower it down as you rotate the legs underneath for support.

When you are done, lock the table back into place then with the panel foot lifted, reach in and pull gently on the Murphy wallbed to lower your bed for a good nights sleep.

MADE IN THE USA



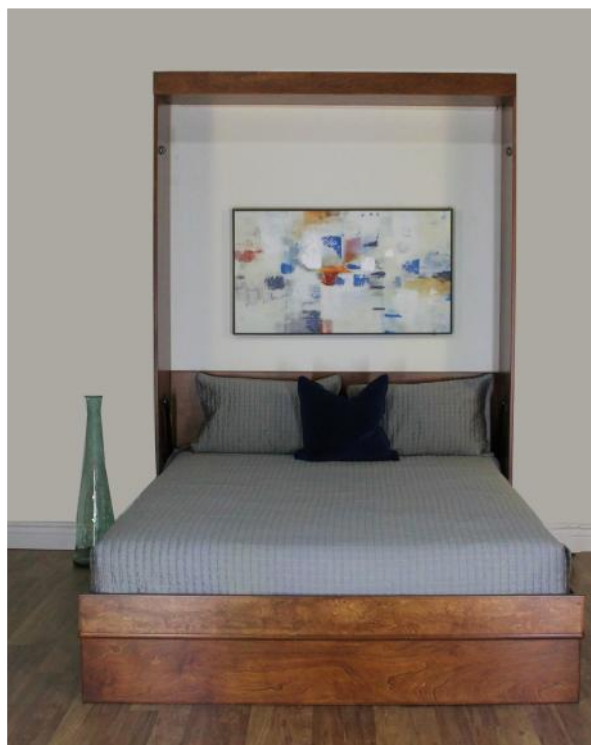
AS SHOWN: EVT50 WITH 2 ANFS IN WHITE FINISH



Options are subject to change without notice MADE IN THE USA



AS SHOWN: EVT50 IN COGNAC FINISH



EURO

SMART ENGINEERING

Two button locks keep the desktop hidden in the Wallbed face. Lift the panel foot, release the button locks while keeping a hold of the table. Lower the table slightly to flip the legs around and lower the table to rest on the legs. The EURO TABLE BED features a wood mattress box surround where you tuck in your bedding -no needs to remove the bedding to close up the bed.

LED LIGHTS are available to add to any of our wallbeds. On/ Off switch and USB charging port found on the headboard. Specify silver or black.

MADE IN THE USA

DELUXE

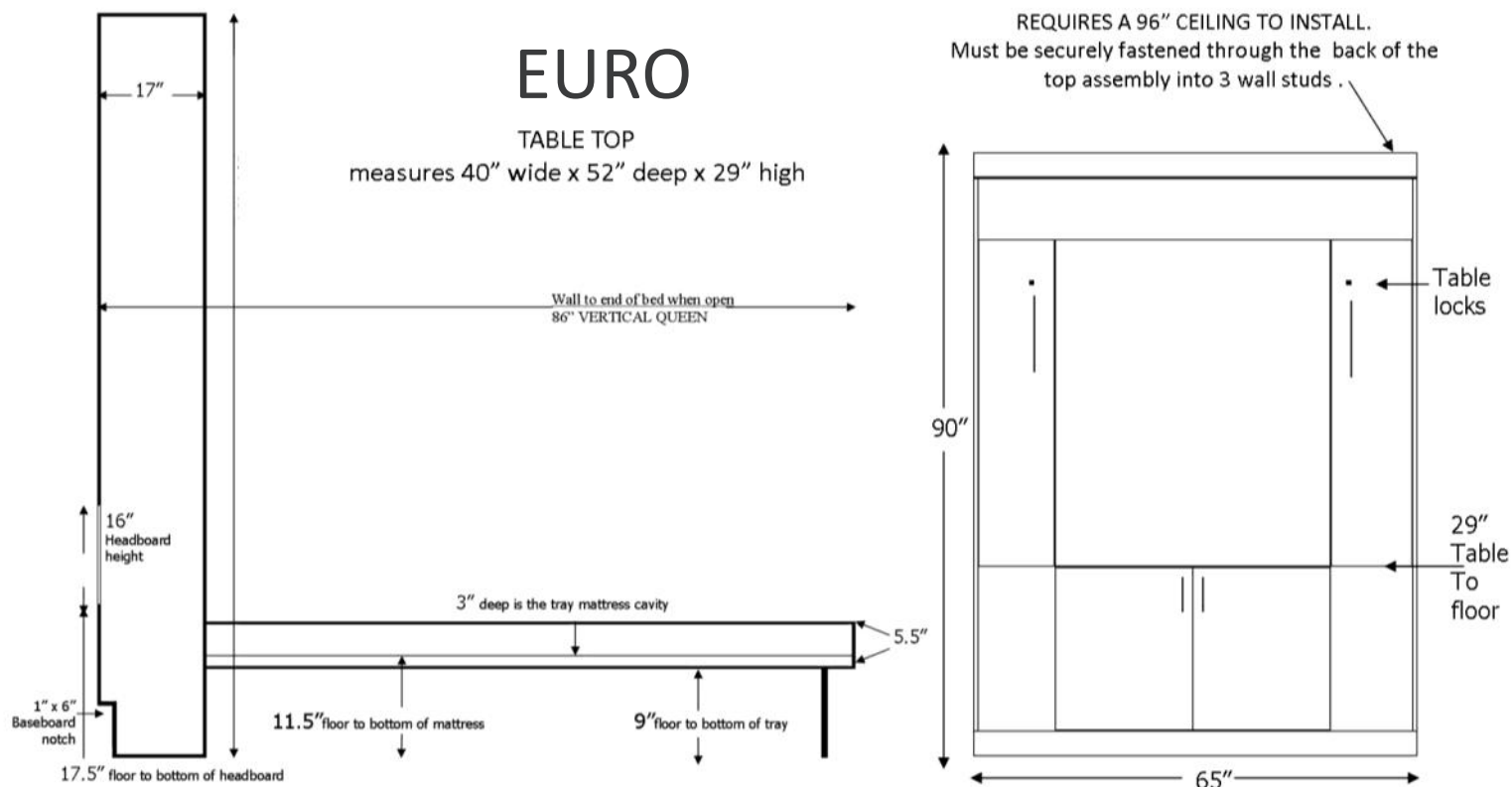
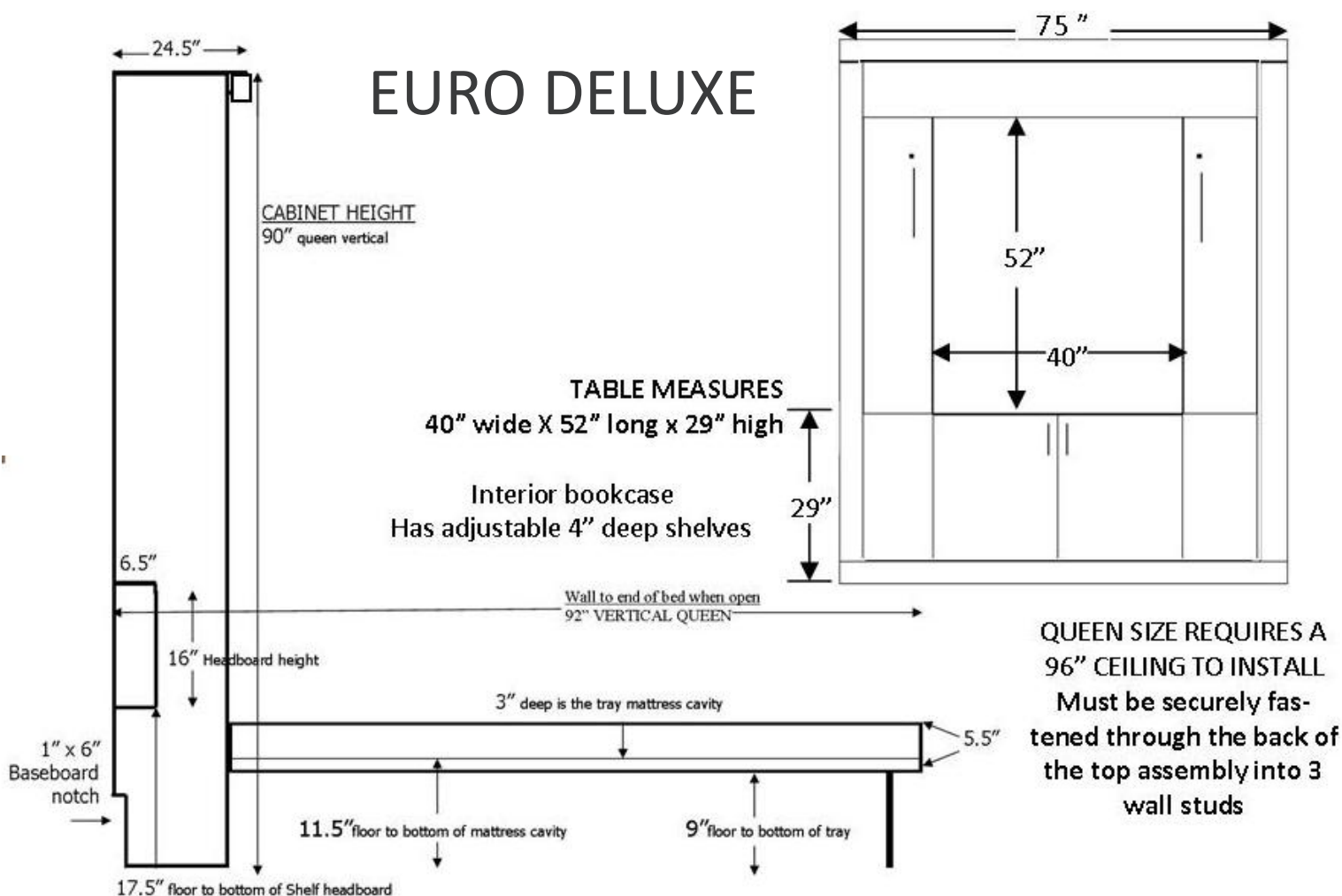
has a dramatic curved top, Interior bookcases on each side of a shelf headboard. Interior shelves are 4" deep and adjustable. We've taken our EURO front and added a deeper cabinet to make it the Deluxe version. The side pier cabinets step back from the Wallbed for a dramatic look. For a stepped look order full size 85" tall side storage cabinets.



SKU: EVXT50 WITH 2 ANFS IN NATURAL FINISH



Options are subject to change without notice MADE IN THE USA





BARRINGTON TABLE BED

BVT50 BPUF BPNF IN CARAMEL FINISH

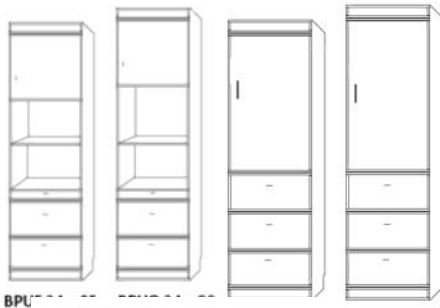
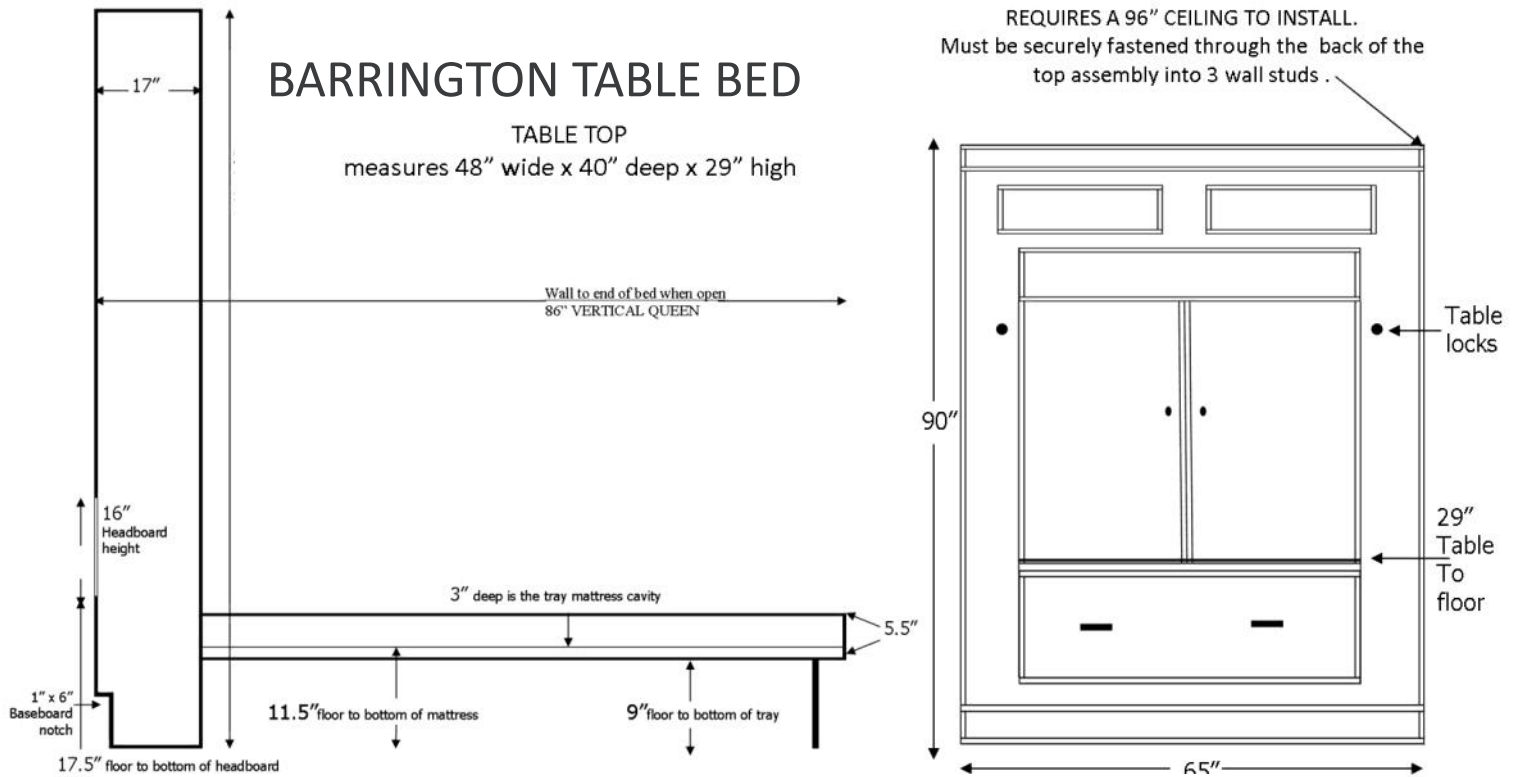


* Options are subject to change without notice

BARRINGTON TABLE BED

TABLE TOP
measures 48" wide x 40" deep x 29" high

REQUIRES A 96" CEILING TO INSTALL.
Must be securely fastened through the back of the top assembly into 3 wall studs.



FILE WARDROBE
2 lateral file drawers, Pencil drawer and upper door with clothes valet.

Specify left or right side Door handle when facing

BPXF 24 x 85

BPXQ 24 x 90



BPWF 32 x 85

BPWU 32 x 85

LATERAL FILES PIER CABINET- 2 file drawers, pencil drawer with open adjustable shelves.

3 DRAWER PIER CABINET- 3 drawers with open adjustable shelves

NIGHTSTAND PIER CABINET- 2 drawers, pull out tray table with open adjustable shelves



BLFS 16 x 85
BLQS 16 x 90



BPLF 24 x 85
BPLQ 24 x 90



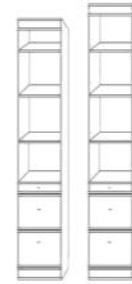
BTFS 16 x 85
BTQS 16 x 90



BPTF 24 x 85
BPTQ 24 x 90



BPGF 32 x 85
BPGQ 32 x 90



BNFS 16 x 85
BNQS 16 x 90



BPNF 24 x 85
BPNQ 24 x 90



BDFS 16 x 85
BDQS 16 x 90

SK BASE
RAIGHT DESKTOP



BPCF 24 x 85
BPCQ 24 x 90



BFD- DESK BASE
BSDL- SHAPED DESKTOP



BDFL 32 x 85
BDQL 32 x 90



MURPHY DESK
BPAF 24 x 85



DESK BED SYSTEM

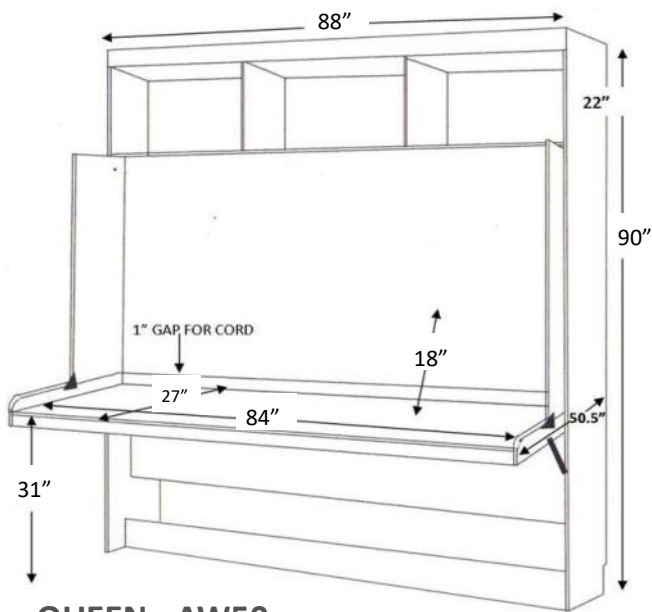
A DESK BED GIVES YOU A LARGE WORK SURFACE TO SPREAD OUT YOUR PROJECT WITH PLENTY OF ROOM

EVERYTHING REMAINS ON THE DESKTOP

WHEN YOU BRING DOWN THE BED FOR A RESTFUL NIGHT'S SLEEP



The Desk Bed is a perfect solution when you need both a bed and work station in one. There is no need to clear off your desktop at bed time, because the whole desk simply compacts down when levered and stays horizontal the entire time. Items up to 18" can remain on the desk when the bed comes down. Our desktop is reinforced to handle twice the load specified. The bed is balanced with pistons to easily transform from office to bed.



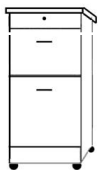
QUEEN -AW50



STORAGE CABINETS– 90" HIGH TO LINE UP AT THE TOP

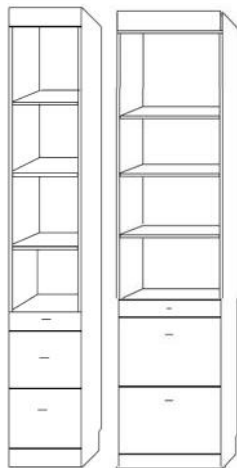
AFC

ROLLING FILE CART
LATERAL FILE DRAWER
WITH 2 ADDITIONAL
DRAWERS

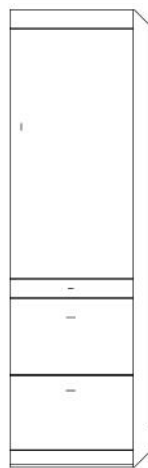


FITS UNDER THE DESK
ROLLS AWAY TO LOWER
THE BED

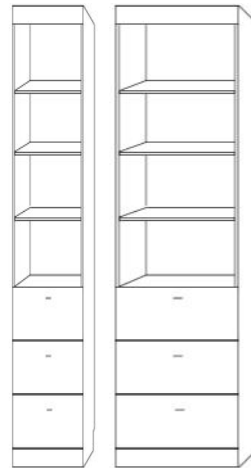
CART MEASURES:
16 5/8" wide
x 28 1/2" high x 21 3/4" deep



2 LATERAL FILE DRAW-
ERS
AND A PENCIL DRAWER
ALQS 16" WIDE

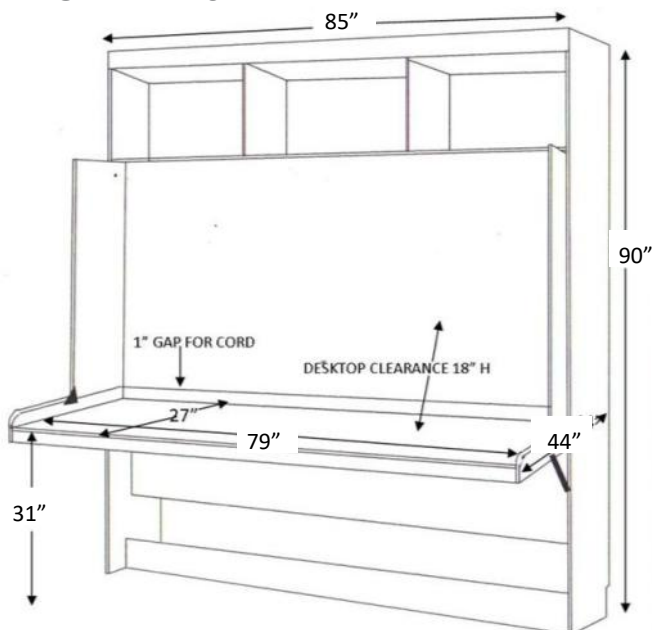


WARDROBE DOOR WITH
CLOTHES HANGAR,
2 LATERAL FILE DRAWERS
AND A PENCIL DRAWER
APXQ –24" WIDE



3 DRAWERS
ATQS 16" WIDE
APTQ 24" WIDE

FULL -AW46



SMART ENGINEERING

Large desktop for all your projects. Wood mattress surround to tuck in your bedding-no needs to remove the bedding to close up the bed. Pillows do need to be removed.

Accepts mattress up to 10" deep

TO OPEN-stand to one side and grab the top of the side of the desk and pull. Once started the piston lift system takes over as the bed with the desk slowly

AVALON

WITH HUTCH

FINISH OPTIONS PAGE 54

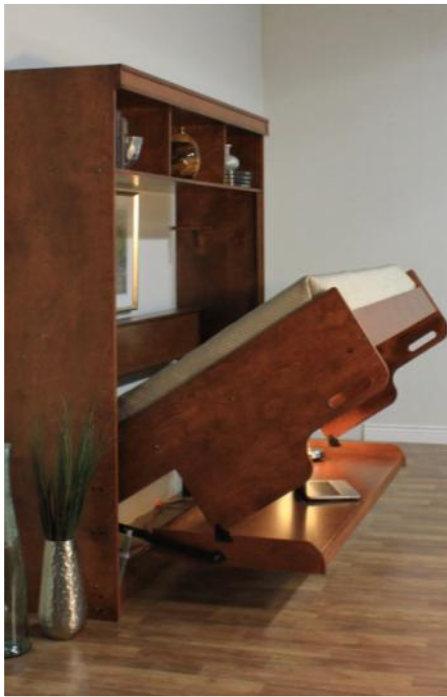


Full Size Avalon in Bark Gray Finish

AW46 BG



Made in the U.S.A.



LARGE WORK SPACE measures 27" deep x 84" long for all your projects. Wood mattress surround to tuck in your bedding-no needs to remove the bedding to close up the bed. Pillows do need to be removed.

Accepts a standard mattress up to 10" deep

SHELF HEADBOARD Is a handy spot for your personal items to rest and becomes the perfect spot to store your pillows when you close up the bed.



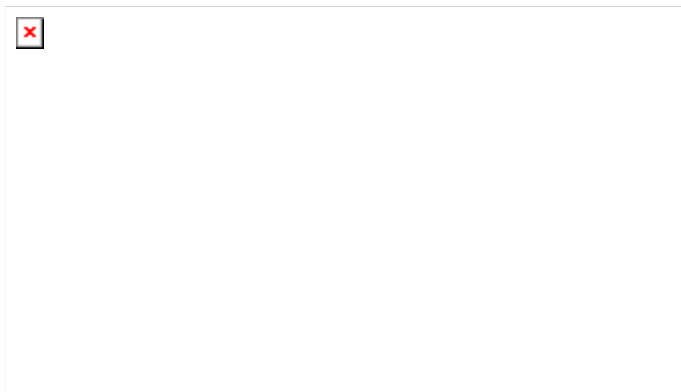
COGNAC FINISH

TO OPEN-stand to one side and grab the top of the side of the desk and pull. Once started the piston lift system takes over as the bed with the desk slowly descend down to the floor.

ROLLING FILE CART-Fits under the desk. Simply roll aside when you lower the bed down. Includes a lateral letter size file drawer, a medium drawer and a pencil drawer. Comes with a finished back .



CART MEASURES: 16 5/8" wide x 28 1/2" high x 21 3/4" deep



NO NEED TO CLEAR YOUR DESKTOP Items up to 18" can remain on the desktop even plugged in when you lower the bed down. There is a 1" gap behind the desktop for your cords to travel. When bed is opened, desktop rests directly on the ground. Always check that the area under the desktop is clear before lowering the bed.

MADE IN THE USA

SMART ENGINEERING

Large desktop for all your projects. Wood mattress surround to tuck in your bedding- no needs to remove the bedding to close up the bed. Pillows do need to be removed.

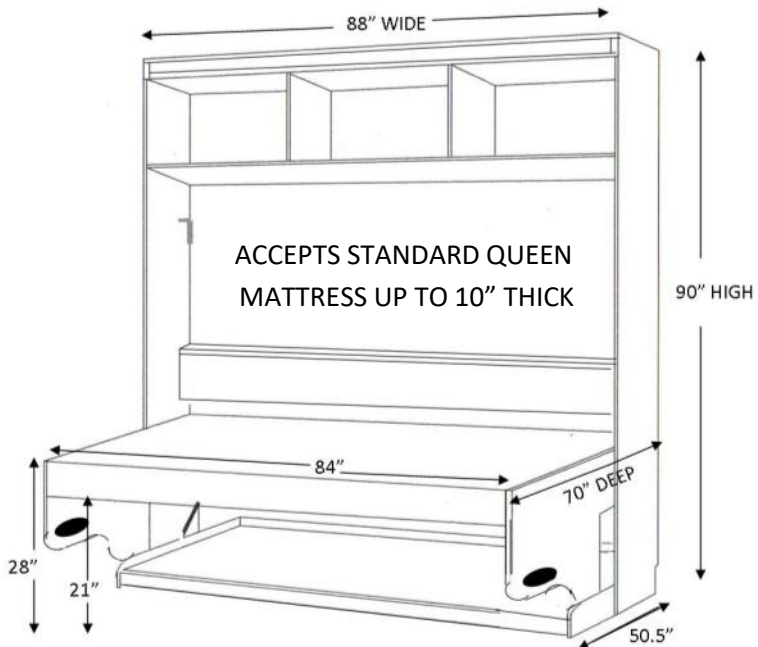
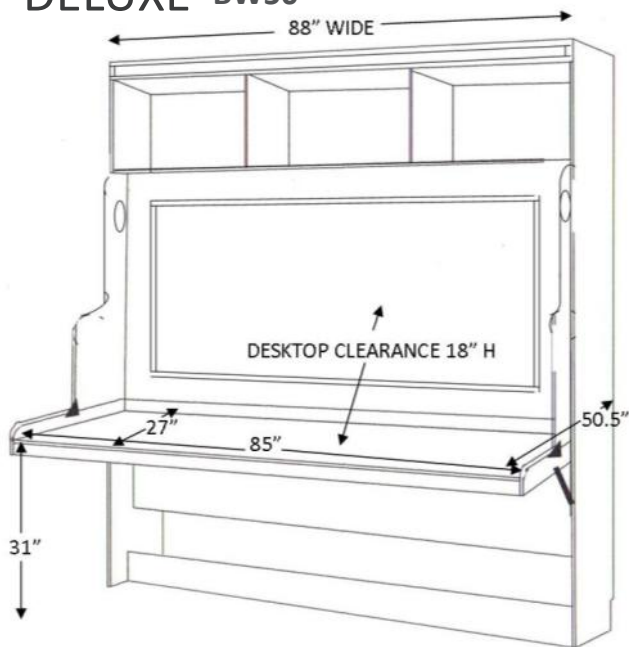
Accepts a standard mattress up to 10" thick

DELUXE WITH HUTCH



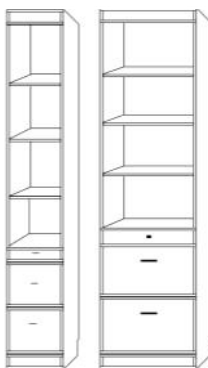
DELUXE DESK BED WITH HUTCH IN COGNAC FINISH SKU:BW50R

DELUXE BW50



SKU: **BFC**
FILE CART
 LATERAL FILE
 DRAWER WITH
 2 ADDITIONAL
 DRAWERS. FITS
 UNDER THE
 DESK. ROLLS
 AWAY TO
 LOWER THE BED.

STORAGE CABINETS– COMPLETE OFFERING ON PAGE



2 LATERAL FILE
 DRAWERS
 AND A PENCIL
 DRAWER
BLQS 16\"/>



WARDROBE DOOR WITH
 CLOTHES HANGAR,
 2 LATERAL FILE DRAWERS
 AND A PENCIL DRAWER
BPLQ 24\"/>



BW50 with BFC in GRAY



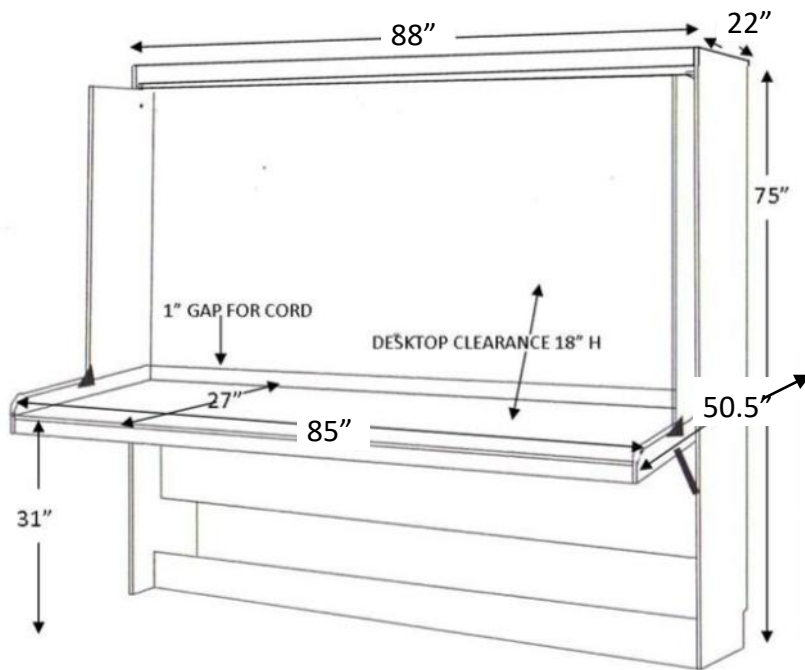
AVALON DESK BED

FULL SIZE IN CHOCOLATE FINISH SKU:AB46

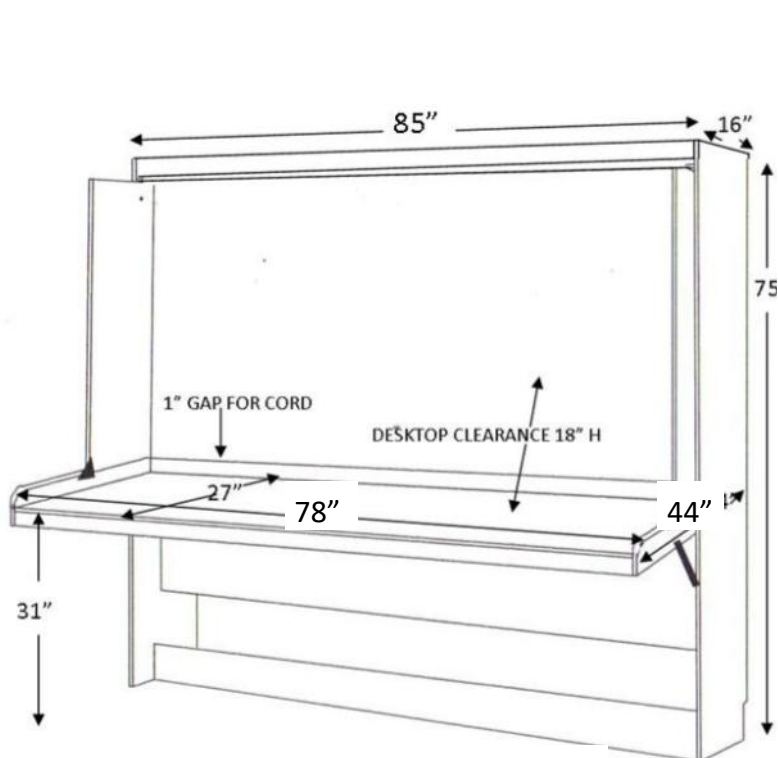
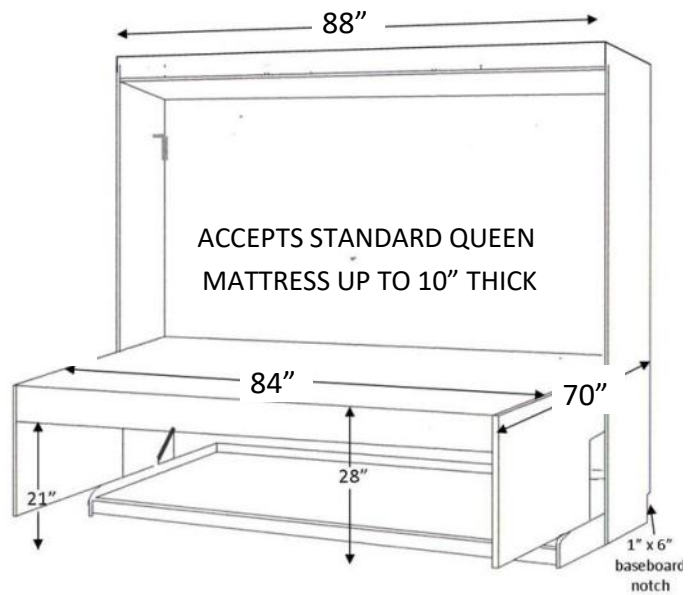


CHOCOLATE FINISH

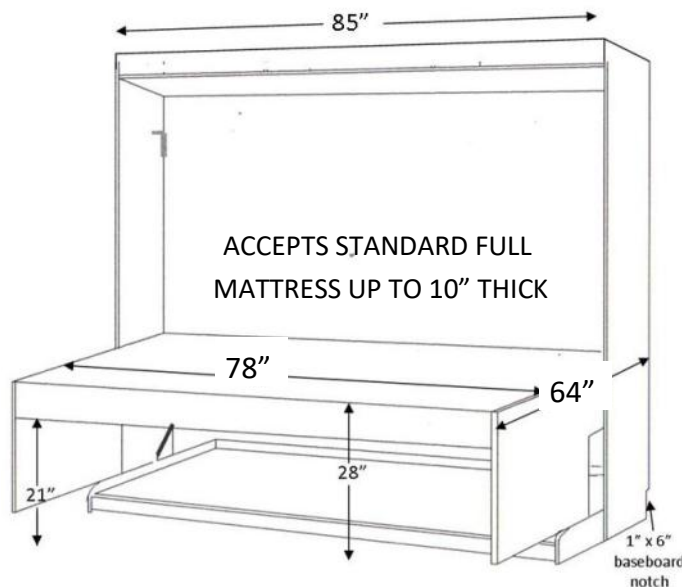
AVALON DESK BED



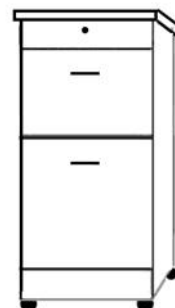
AB50 Queen Horizontal Desk Bed



AB46 Full Size Horizontal Desk Bed



CART MEASURES:
16 5/8" wide
x 28 1/2" high x 21 3/4" deep



AFC
ROLLING FILE CART
LATERAL FILE DRAWER
WITH 2 ADDITIONAL
DRAWERS

FITS UNDER THE DESK
ROLLS AWAY TO LOWER
THE BED



AVALON DESK BED SKU: AB46 SUNSET FINISH



ABOUT THE MECHANISM AND INSTALLATION

These beds utilize a safe piston lift system. It provides the longest life we could find, and are easy to replace when they have rare problems. Our gas pistons have been tested in both lab and use conditions for 16,000 cycles with no noticeable wear or change in performance. Last of all if a piston fails, which we see on only 1 of 5000 cases, it does so by quietly losing its power.

ABOUT BIRCH

Birch is a durable and timeless hardwood that expands and contracts with changes in humidity and may color over time as it's exposed to air, sunlight and wear. Our premium grade solid woods and solid wood veneers are sustainably harvested from domestic sources. Our veneers are created by slicing thin sheets from solid wood and applying them over core panels. Using veneers in combination with solid wood gives greater stability while reducing expansion and contraction due to humidity. Color, grain and markings may vary with each piece. Our lacquer is a clear, low sheen finish that seals and helps protect surfaces, while highlighting the natural beauty of real wood. Lacquer is formulated to hold up well to daily use but take care to avoid direct heat. To care for your furniture-just wipe with a soft damp cloth and then dry the surface immediately. All wood is susceptible to scratches and dings so use coasters and pads to protect your furniture.

CARE OF YOUR SPECIALTY MURPHY WALLBED

Inspect your Murphy Wall bed annually to ensure that it is securely fastened to the wall. Dust with a soft, clean cloth slightly moistened with water, and dry completely with another clean cloth, always rubbing with the grain. Avoid contact with cigarettes, hot dishes, and harsh solvents such as nail polish, alcohol and moisture. Use pads beneath accessories and when writing or eating. Remove spills and smudges immediately. Do not leave pliable plastic materials on a wood surface; they can damage the finish. Do not place furniture near heat outlets, windows, or in direct sunlight.

FINISH OPTIONS



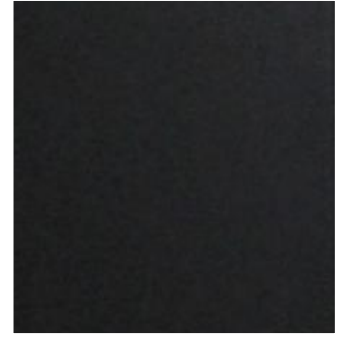
CARAMEL (B)



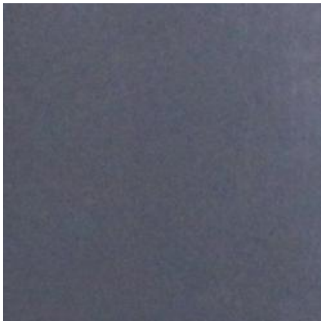
COGNAC (R)



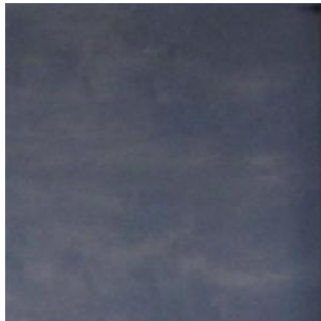
CINNAMON (E)



CHOCOLATE (D)



GRAY (G)



BARK GRAY (BG)



MAPLE (M)



SUNSET (S)

Slight variation in color will occur between this and the actual product. Actual product may also have grain pattern, character markings and dark or light variations. The overall appearance will provide an even coloring , but subtly reveal the joinery seams and wood grain effects of your true wood furniture.



WHITE (W)



NATURAL (N)

DECORATIVE HARDWARE OPTIONS

BARRINGTON, GLEN ELLYN, JAZZ, LODGE, KEYSTONE, NANTUCKET, TAHOE, RYLAND, YELLOWSTONE, PORTOLA, SARATOGA and WOODLAND.



#11 CODY NICKEL



#12 CODY BRONZE



#10 CODY BLACK



#8 ATHERLY NICKEL



#6 ATHERLY BRONZE



#13 BRONZE BAR



#3 NICKEL BAR



#9 CYPRUS BRUSHED GOLD

SONOMA



#9 CYPRUS BRUSHED GOLD

DUBLIN, EURO, SONOMA



#13 BRONZE BAR



#3 NICKEL BAR

BARRINGTON



#4 BLACK CUP



#2 NICKEL CUP



#7 BRONZE TWIST



www.wallbedsnmore.com

**Please refer to our website for showroom locations,
additional product photos and information**