

**Wallbeds**  
*"n" More*

A comfortable extra  
bed for any room!

# SARATOGA



Caramel



White

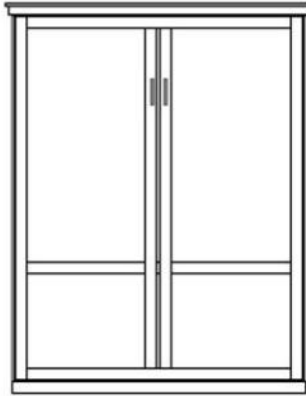
Ci

**FINISH OPTIONS**

- Cognac-R
- Caramel-B
- Bark Gray-BG
- Sunset-S
- Natural -N
- Maple-M
- Gray-G
- Cinnamon-E
- Espresso-D
- White-WH (WH 10% Charge)

**HARDWARE**

- #3 Nickel Bar
- #13 Bronze Bar
- #10 Cody Black
- #11 Cody Nickel
- #12 Cody Bronze
- #14 Cody Gold
- #15 Bridge Black
- #16 Bridge Bronze
- #17 Bridge Nickel



**SV50 QUEEN** \_\_\_\_\_

- CLOSED- 69 x 18.5 x 92
- OPEN - 69 x 87 x 92

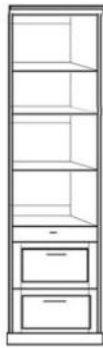
Accepts up to a 12" thick mattress

*Please Specify Left or Right Side facing Pier Cabinets*



**3 DRAWER**

- STFS 18.5 X 85 \_\_\_\_\_
- SPTF 25.5 X 85 \_\_\_\_\_
- SPGF 33.5 X 85 \_\_\_\_\_



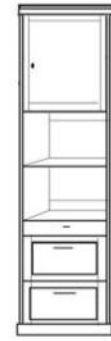
**2 DRAWER TRAY**

- SNFS 18.5 X 85 \_\_\_\_\_
- SPNF 25.5 X 85 \_\_\_\_\_



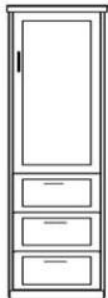
**FILE PENCIL DRAWER**

- SLFS 18.5 X 85 \_\_\_\_\_
- SPLF 25.5 X 85 \_\_\_\_\_



**DOOR -TRAY- 2 DRAWERS**

- SPUF 25.5 X 85 \_\_\_\_\_



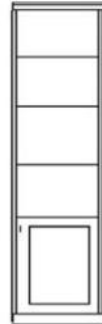
**3 DRAWER-DOOR**

- SWFS 18.5 X 85 \_\_\_\_\_
- SPWF 24.5 X 85 \_\_\_\_\_



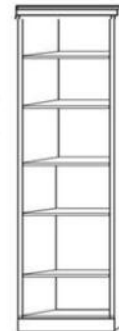
**2 FILES-PENCIL-DOOR**

- SXFS 18.5 X 85 \_\_\_\_\_
- SPXF 25.5 X 85 \_\_\_\_\_



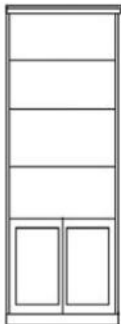
**OPEN DOOR**

- SDFS 18.5 X 85 \_\_\_\_\_
- SPCF 25.5 X 85 \_\_\_\_\_



**BOOKCASE**

- SBFS 18.5 X 85 \_\_\_\_\_
- SPBF 25.5 X 85 \_\_\_\_\_



**2-DOOR**

- SDFL 33.5 X 85 \_\_\_\_\_



**GUEST CHEST**

- SPWU 33.5 X 85 \_\_\_\_\_

**NIGHTSTAND**

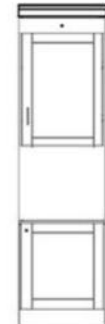
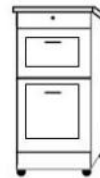
24 x 16 x 29

- SNS \_\_\_\_\_
- 2 DRAWERS/PENCIL
- SNST \_\_\_\_\_
- 2 DRAWERS/TRAY



**FILE CART**

- SFC \_\_\_\_\_
- 16.5 x 21.5 x 28

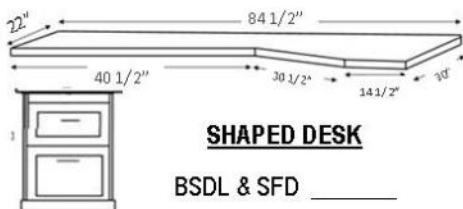


**FOLDING DESK**

- SPAF 25.5 X 85 \_\_\_\_\_
- Desk is 48" Long
- Extends to 59"



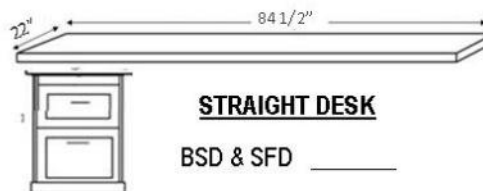
BSDL- shaped desktop- Requires SDFL



**SHAPED DESK**

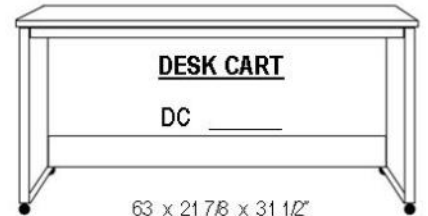
- BSDL & SFD \_\_\_\_\_

BSD- straight desk- Requires SPUF



**STRAIGHT DESK**

- BSD & SFD \_\_\_\_\_



**DESK CART**

- DC \_\_\_\_\_

63 x 21 7/8 x 31 1/2"