

**Wallbeds**  
"n" More

A comfortable extra  
bed for any room!

# FALLBROOK



Fallbrook shown with 3 drawer pier cabinet in Bark Gray FV50, ATQS



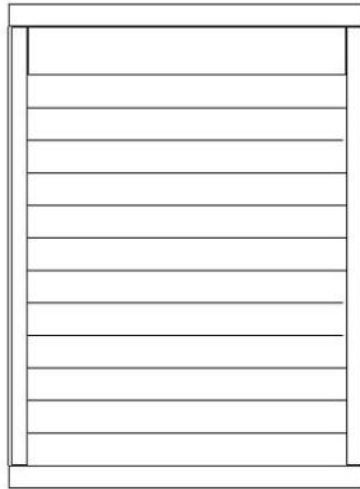
Bark Gray

**FINISH OPTIONS**

- Cognac-R
- Caramel-B
- Bark Gray-BG
- Sunset-S
- Natural-N
- Maple-M
- Gray-G
- Cinnamon-E
- Espresso-D
- White-WH
- (10% up-Charge)

**CABINET HARDWARE**

- #2 Nickel cup
- #4 black cup
- #3 Nickel Bar
- #13 Bronze Bar
- #10 Cody Black
- #11 Cody Nickel
- #12 Cody Bronze
- #14 Cody Gold
- #15 Bridge Black
- #16 Bridge Bronze
- #17 Bridge Nickel
- #18 Bridge Gold

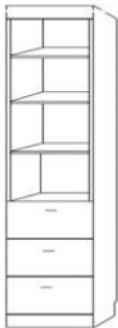


FV50

QUEEN \_\_\_\_\_

CLOSED- 65 x 17 x 90 OPEN - 65 x 86 x 90

Can accommodate up to a 12" thick mattress



**3 DRAWER**

- ATFS 16 X 85 \_\_\_\_\_
- ATQS 16 X 90 \_\_\_\_\_
- APTF 24 X 85 \_\_\_\_\_
- APTQ 24 X 90 \_\_\_\_\_
- APGF 32 X 85 \_\_\_\_\_
- APGQ 32 X 90 \_\_\_\_\_



**2 DRAWER TRAY**

- ANFS 16 X 85 \_\_\_\_\_
- ANQS 16 X 90 \_\_\_\_\_
- APNF 24 X 85 \_\_\_\_\_
- APNQ 24 X 90 \_\_\_\_\_



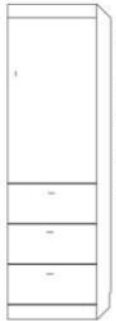
**FILE PENCIL DRAWER**

- ALFS 16 X 85 \_\_\_\_\_
- ALQS 16 X 90 \_\_\_\_\_
- APLF 24 X 85 \_\_\_\_\_
- APLQ 24 X 90 \_\_\_\_\_



**DOOR -TRAY- 2 DRAWERS**

- APUF 24 X 85 \_\_\_\_\_
- APUQ 24 X 90 \_\_\_\_\_



**3 DRAWER-DOOR**

- AWFS 16 X 85 \_\_\_\_\_
- AWQS 16 X 90 \_\_\_\_\_
- APWF 24 X 85 \_\_\_\_\_
- APWQ 24 X 90 \_\_\_\_\_



**2 DRAWER-TRAY-DOOR**

- AXFS 16 X 85 \_\_\_\_\_
- AXQS 16 X 90 \_\_\_\_\_
- APXF 24 X 85 \_\_\_\_\_
- APXQ 24 X 90 \_\_\_\_\_



**OPEN DOOR**

- ADFS 16 X 85 \_\_\_\_\_
- ADQS 16 X 90 \_\_\_\_\_
- APCF 24 X 85 \_\_\_\_\_
- APCQ 24 X 90 \_\_\_\_\_



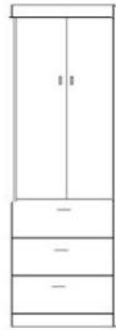
**BOOKCASE**

- ABFS 16 X 85 \_\_\_\_\_
- ABQS 16 X 90 \_\_\_\_\_
- APBF 24 X 85 \_\_\_\_\_
- APBQ 24 X 90 \_\_\_\_\_



**2-DOOR**

- ADFL 32 X 85 \_\_\_\_\_
- ADQL 32 X 90 \_\_\_\_\_



**GUEST CHEST**

- APWU 32 X 85 \_\_\_\_\_

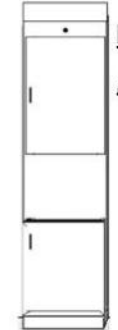
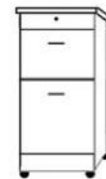
**NIGHTSTAND**

24 x 16 x 29

- ANS \_\_\_\_\_
- 2 DRAWERS/PENCIL
- ANST \_\_\_\_\_
- 2 DRAWERS/TRAY

**FILE CART**

- AFC \_\_\_\_\_
- 16.5 x 21.5 x 28



**FOLDING DESK**

- APAF 24 X 85 \_\_\_\_\_
- Desk is 48" Long
- Extends to 59"



BSDL-Shaped desktop (LSF or RSF) REQUIRES ADFL or ADQL



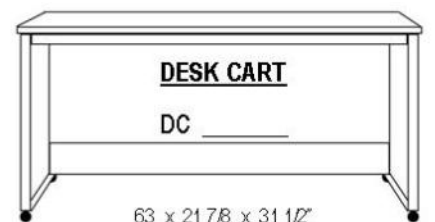
**SHAPED DESK**

BSDL & AFD \_\_\_\_\_



**STRAIGHT DESK**

BSD & AFD \_\_\_\_\_



**DESK CART**

DC \_\_\_\_\_

63 x 21 7/8 x 31 1/2"